



CRIS BUSINESS EXCELLENCE AWARDS



BEST PRACTICE

Jarvis Plain Line Track Renewals OLE Survey & Design Process



- Integration of multiple spreadsheet based design tools into one analysis package
- Involved deconstructing existing processes and rebuilding
- Included step change in surveying practice to input data acquisition electronically
- No manual transfer of data eliminating potential for errors
- Demonstrable efficiency savings leading to lower price but greater margin
- Secured additional forward workbank



Jarvis Plain Line Track Renewals OLE Survey & Design Process



Comments from BEA Judges

- Innovative use of technology to speed up existing design processes delivering greater efficiencies and an impact to the bottom line
- Not just a one off but part of a continuing process of improvement



Sustainability & CO2 Reduction



- CI Project to develop sustainable working practices and change the way in which we design
- Development of working guidelines for designers
- Top 5 Hit List:
 - Cement replacement materials,
 - local sourcing strategy
 - Reduce waste on site
 - Use reclaimed, recycled and site-won materials
 - Increase durability of structures
- Guidelines for individuals to address in social and domestic settings as well as at work



Sustainability & CO2 Reduction



Comments from BEA Judges

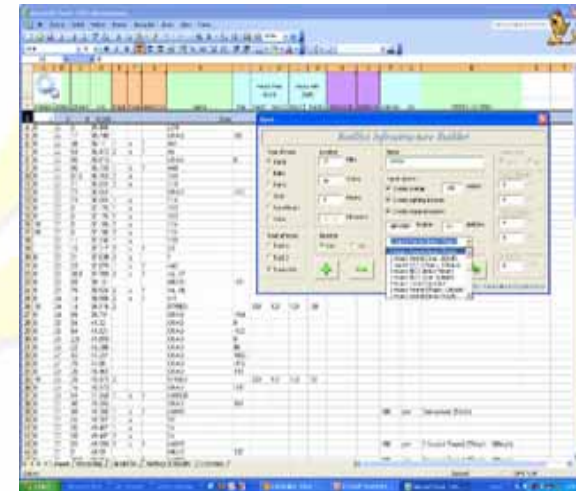
- Great start to introducing a culture of change within the CRIS business to address real global issues
- The initiative is being driven with passion by a committed team determined to make a difference



Operational Modelling Data Processing



- Automatic conversion of raw TRUST data into a format suitable for CRIS software
- Facilitates build of infrastructure quickly and efficiently
- 30-50% time savings allowing more focus on added value elements of projects
- Automatic upload of Network rail data eliminates risk of errors in manual entry
- Innovation driven from Poland and potential barriers due to language and take up overcome

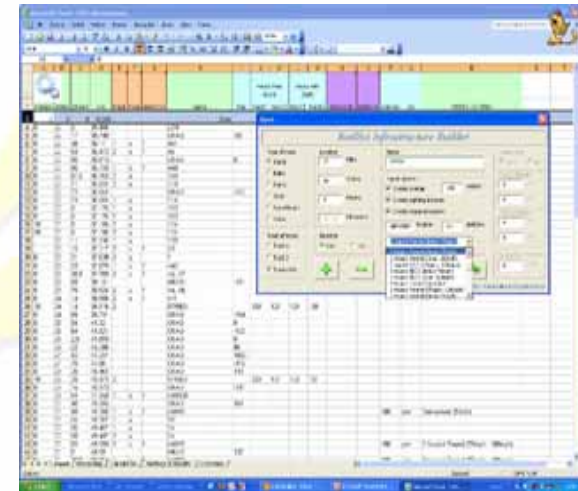


Operational Modelling Data Processing



Comments from BEA Judges

- The Polish members of the team demonstrated real initiative and tenacity in seeing an opportunity to automate conventional methods of data input
- Innovation has provided tangible benefits to the team in terms of efficiency and elimination of errors



Modular Station Concept

- Development of design carried out by others generating efficiencies and cost savings
- High quality off site construction matched with effective construction led to prototype station constructed in 35 days
- Continued design evolution to value engineer savings to Client
- Leverage of Corus best practice from other industries
- Allowed development of modular concept in-house and application outside station buildings



Modular Station Concept



Comments from BEA Judges

- Scheme demonstrates the benefits of seeking alternative ways of doing things and leveraging capability within the wider Corus to benefit CRIS
- Through all three station schemes there has been continued improvement and refinement of the design to offer best value to the Client



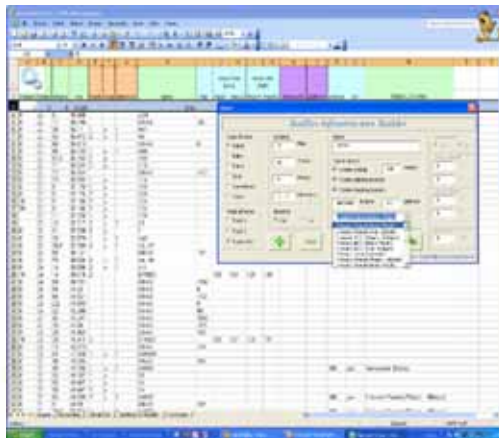
Best Practice



OLE Survey and Design



Sustainability and CO2 Reduction



**Operational Modelling
Data Processing**



**Modular Station
Concept**



CRIS BUSINESS EXCELLENCE AWARDS



SMALL PROJECT OF THE YEAR

Llanharan Station Platform



- Effective delivery of 2 new platforms against tight programme
- Facilitated station opening for new winter timetable
- Included training and use of local labour
- Margins achieved greater than expected at tender stage
- Consolidated relationships with GallifordTry and established modular platforms as preferred solution



Llanharan Station Platform



Comments from BEA Judges:

- Team has restored credibility and confidence with the client providing a foundation for future work
- Good proactive attitude demonstrated with regard to the understanding and delivery of the Client goals



Thameslink Surveys & Gauging



- Project successfully delivered to time and under budget
- Large volume of surveys in short time with remote survey teams
- Used as a training ground for UK and Polish gauging surveys
- OLE innovation allowing significant time savings and removal of errors
- Overcome challenges with using client generated clearance data by developing pragmatic solutions



Thameslink Surveys & Gauging



Comments from BEA Judges:

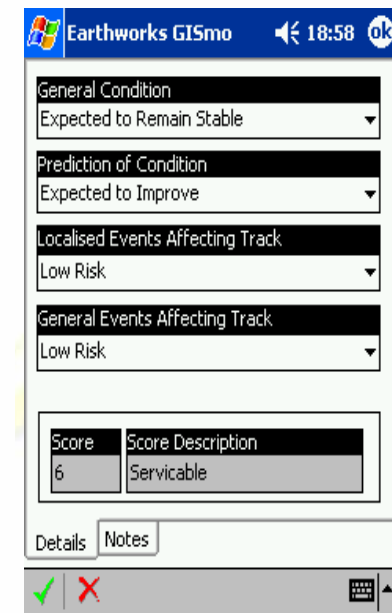
- Excellent use of innovation to deliver on time and improved profit
- Client satisfaction has led to follow on work
- Diverse nature of the team is impressive involving OLE and Surveyors from York and Poland.



Earthworks Assessment 2006-2007



- Assessment of over 378 miles of embankment and cuttings with over 1500 bridge approach assessments
- Use of new software and web capability to deal with welfare facilities at over 3000 sites
- High commendation from Network Rail's client team
- Team now established as the sole consultant for Network Rail LNE for this work

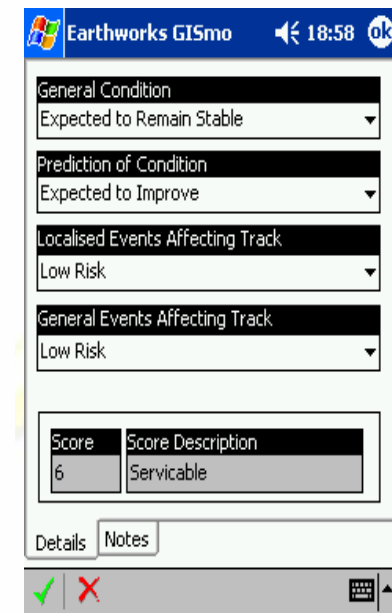


Earthworks Assessment 2006-2007



Comments from BEA Judges:

- Excellent delivery given significant timing problems and good use of innovative techniques to assist the process
- Motivation of the team was of a high order and there was a clear proactive and positive attitude to problem solving



Leeds Station Southern Entrance



- Development of Corus GRIP 1 study to GRIP 3
- High quality product including solutions for the public area over the river Aire
- Corus designed and managed all services including architecture, ped flow, fire engineering and QS
- Client focus on function and form rather than low cost solution



Leeds Station Southern Entrance



Comments from BEA Judges:

- Very impressive in terms of complexity and the management of a multi-disciplined team involving internal teams and external suppliers
- Andrew Sharpe's enthusiasm and commitment came over very positively

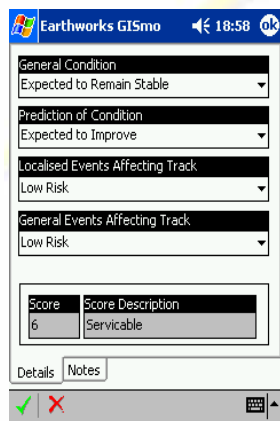


Small Project of the Year



Llanharon Station Platform

Thameslink Gauging and Surveys



Earthworks Assessment

Leeds Station Southern Entrance





CRIS BUSINESS EXCELLENCE AWARDS



MAJOR PROJECT OF THE YEAR

Potters Bar Canopy Renewals



- High quality multi-disc design delivered on time and to budget
- D&B contract with Nuttall included value engineered solutions to help construction
- Onerous operational environment requiring innovative design solutions
- Demolition of existing post tensioned canopy
- Offsite assembly to ensure quality and maximise time spent on site construction



Potters Bar Canopy Renewals



Comments from BEA Judges

- Key risks identified early and agreed with the contractor with design liability remaining with CRIS
- Effective and efficient design bought into by Network Rail through continual engagement leading to shortened approval period
- Team commitment to timescales evidenced by Boxing Day site work and only 2 week mobilisation



Reading Area Station Re-development



- High profile multi-disc scheme delivered on time under budget to a delighted client
- Complex track layout in highly congested area
- Significant structures including 1km R.C. Box; 2No. 130m steel viaducts and 5 bridges
- 3 Depot layouts involving extensive civils works
- Accelerated design programme to meet revised client needs
- Risk based design to overcome lack of design information available



Reading Area Station Re-development



Comments from BEA Judges

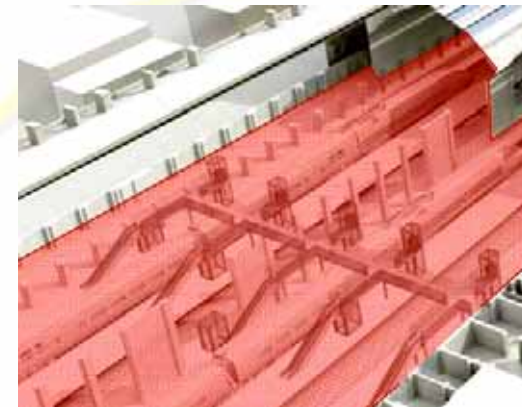
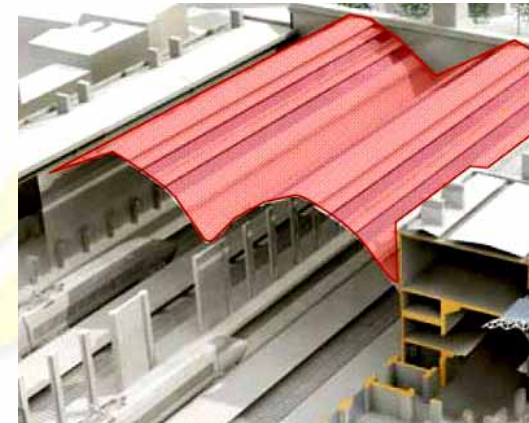
- Clearly solid engineering design and advice has been given to and well received by the whole stakeholder team
- Collocation has been a great benefit and all staff have demonstrated a flexible and committed approach



Kings Cross Station Re-development



- High profile scheme involving renewals and enhancements in listed structure
- Significant team effort required to meet tech'l challenges and accelerated programme
- Complexity in design requiring innovative solutions
- Demonstrated flexibility to meet client requirements and focus on relationships leading to a trebling in order value
- All milestones achieved including advanced package pre Christmas 07

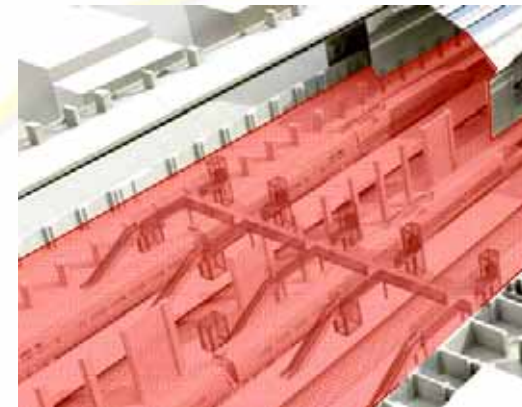
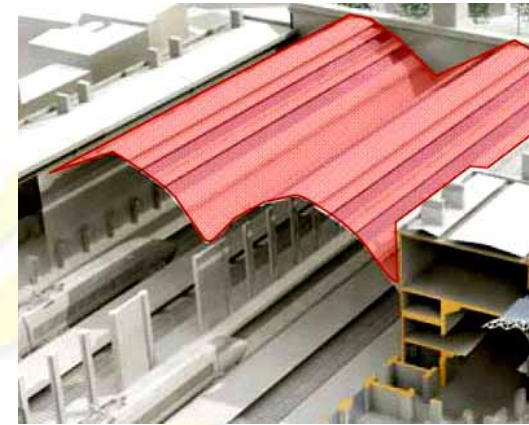


Kings Cross Station Re-development



Comments from BEA Judges

- High profile project with resultant high risk which has been very effectively managed
- Responsiveness and flexibility has been a major benefit to the client which has generated additional work
- Clear management of internal team and suppliers
- Successful collocation and good use of Corus resource to deliver



Water Orton Corridor Re-signalling



- Fast paced scheme involving 82 point ends, 23km of plain line and sections of 4-tracking
- Delivery of GRIP 4 design with minimal design being previously completed
- Project team have achieved all milestones and exceeded expectations by delivering a must-win project on budget
- Focussed technical team and active engagement with Client Team leading to once through engineering
- Streamlined process to ensure technical issues were dealt with promptly maintaining programme



Water Orton Corridor Re-signalling



Comments from BEA Judges

- Turned a loss leader into profit whilst achieving recognition of expertise from a new client
- Established procedures to keep the client informed, gain additional fees and improve management efficiency
- Encouraging team effort in contributing to innovation
- Good client engagement to secure acceptance of first time design



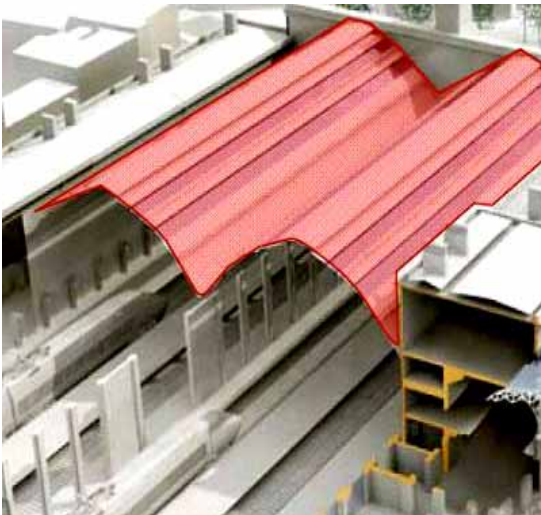
Major Project of the Year



Potters Bar Canopy
Renewals



Reading Station Area
Redevelopment



Kings Cross Station



Water Orton
Resignalling



CRIS BUSINESS EXCELLENCE AWARDS



RISING STAR OF THE YEAR

Jack French



- Jack has developed rapidly in a short space of time
- He welcomes new challenges and works hard to ensure he meets these challenges and delivers to the end client
- Very proactive and great approach to design schemes
- Prepared to engage with other disciplines to progress his projects
- Great Client feedback with Clients asking for Jack to be involved on future projects
- “Jack stands head and shoulders above his peers”



Jack French



Comments from BEA Judges

- Jack's contribution, approach to work and his application in planning and learning lessons from projects is very impressive for someone of his age and experience
- Shows great maturity in his dealings with colleagues and clients and in his ability to understand his team and the wider business needs.



Rob Brotherton

- Rob moved from plain line into S&C in 2007 and has grasped the opportunity to get involved on major projects
- An integral part of the Water Orton success including responsibility for identifying major cost savings for the Client
- Always keen to learn and more importantly understand the detail of his designs without relying on computer output
- Has looked to improve the design process and developed IT solutions to improve this process
- Great team player and has grown in ability and confidence in a short space of time



Rob Brotherton



Comments from BEA Judges

- A fully committed and accomplished engineer not afraid to stretch himself and actively seek to learn from others
- He is prepared to challenge the conventional wisdom and seek better ways of doing things while ensuring his and his teams effective delivery on projects.



Gareth Thompson



- Gareth has made a significant contribution to the OLE Team success in 2007
- He developed improved software and interactive tools which realised major savings
- First CRI Sgraduate to undertake the IMechE eMPDS scheme
- Shortlisted for Corus Group Graduate of the Year awards
- Has taken on lead role on key projects such as Kings Cross
- Gareth invests his own time in CRIS external projects such as right to read and engineering workshops



Gareth Thompson



Comments from BEA Judges

- Gareth demonstrates passion and excitement clearly delivering tangible benefits to the business
- He has real enthusiasm for his profession and his discipline, putting himself out there in terms of Corus, IMechE and the local community



John Wood

- An integral part of the success of the B'Ham office as centre of excellence for modular
- Has led a variety of schemes including collocation with GallifordTry on the structures framework and site management of CRMS platform schemes
- Has project engineered modular station schemes dealing with significant change from client team professionally and efficiently
- Hard working and a real team player respected by colleagues and clients



John Wood



Comments from BEA Judges

- John has clearly demonstrated passion and commitment taking his own career and the CRIS business forward
- He has had a demonstrable impact on the Birmingham office facilitating growth and enhancing reputation



RISING STAR OF THE YEAR



Jack French



Rob Brotherton



Gareth Thompson



John Wood



CRIS BUSINESS EXCELLENCE AWARDS



STAR OF THE YEAR

Rob Bowen

- Rob has been key to the success of the Reading project
- Collocated with the client team he has worked effectively with the design team in York
- Exceptional client feedback reflecting high degree of dedication, professionalism and ability to work in an integrated team
- High quality of output reflected in client feedback and quality of GRIP 3 deliverables



Rob Bowen



Comments from BEA Judges

- Rob's high technical ability has clearly won the confidence of the client
- He has demonstrated a proactive response and attitude to resolving problems identified by the client team
- He has made effective use of the Corus resource and been an integral part of the overall team



John Judge



- John has rebuilt and enhanced the credibility and competence of the Geotechnical Team
- Proactive approach to knowledge and skills transfer including leading lunchtime training
- Great client focus has led to a much improved team financial performance and improved forward workload
- John has tremendous energy and ability and brings a contractors approach to CRIS projects
- He has made significant contributions in both the rail and non-rail markets helping the business to grow and diversify



John Judge



Comments from BEA Judges

- John recognised difficulties in rebuilding a team low in confidence and developing a solid client base and set out to address these
- He has developed a strong team in a short period with much improved industry reputation
- Recognises need to continuously disseminate culture to staff with good use of lunchtime talks and invites to external clients
- Has developed flexibility to take on bigger and better schemes



Keith Moverley

- Keith has been fundamental to the success of the Kings Cross project.
- Collocated with the Client Team Keith has carved an excellent reputation for CRIS and enhanced his own through effective delivery
- Focussed on the needs of the Client and demonstrates flexibility and a real “can do” attitude
- Successfully leads a multi-disciplinary team, with an ability to delegate and motivate ensuring project success
- Keith’s lead role on Kings Cross and his wider contribution to the CRIS business are an example to all



Keith Moverley



Comments from the BEA Judges

- Keith has raised Corus' profile in London market and positioned Corus well for future London and SE projects
- Keith has excellent man management skills, demonstrates flexibility and understanding of achieving a balance of client/company commitment
- Clearly client focussed and passionate about delivering a quality service



Tony Finlinson

- Tony was a key factor in the opening of St Pancras station for international travel
- Acting as T&C Engineer, Power Supply Manager, Test Track Manager and Test Train Leader through the commissioning stages
- One of a handful of people in the UK capable of undertaking this type of role
- Excellent client feedback and a real appreciation of the difference Tony has made
- An example to other engineers in the business of true professionalism



Tony Finlinson



Comments from BEA Judges

- Innovative and clear thinking in pressure situations
- High technical competence provides credibility in persuading client of need to change
- Natural confidence in own ability and competence
- Effective use of support resources
- Corus need to capitalise on Tony's market leading expertise both in sales and training of successors



STAR OF THE YEAR



Rob Bowen



John Judge



Keith Moverley



Tony Finlinson



CRIS BUSINESS EXCELLENCE AWARDS



TEAM OF THE YEAR

Bridges Team

- Continued improvement across all business metrics
- A “multi-disciplinary” team with skills in bridges, modular, renewals and industrial arenas
- Balanced requirements on new market areas with base workload, delivering quality projects in tight timescales
- Developing relationships with clients, contractors and suppliers

Bridges Team

- Continued improvement across all business metrics
- A “multi-disciplinary” team with skills in bridges, modular, renewals and industrial arenas
- Balanced requirements on new market areas with base workload, delivering quality projects in tight timescales
- Developing relationships with clients, contractors and suppliers

Comments from BEA Judges

- Team are willing to adapt and broaden skills beyond conventional bridge works
- Leading the way in diversification through work in modular and industrial
- Commitment to training engineers from a young age

Proposals Team

- Improved processes and access to quality documentation resulting in better quality and consistent bid submissions
- Developed into business development, through contact with Client counterparts, and marketing areas
- Flexibility to take on fee earning work when required
- Support to Bid Managers and Project Managers in ensuring CMS is correctly set up

Proposals Team

- Improved processes and access to quality documentation resulting in better quality and consistent bid submissions
- Developed into business development, through contact with Client counterparts, and marketing areas
- Flexibility to take on fee earning work when required
- Support to Bid Managers and Project Managers in ensuring CMS is correctly set up

Comments from BEA Judges

- The team has clearly improved and delivered excellent internal service to bid managers
- Flexible and pro-active team members committed to continuing improvements in service

Survey Team

- A mix of highly utilised surveyors and engineers who work all over the UK
- Exceptional turnaround in team performance during 2007
- The survey team's performance has led to the award of additional design work
- The team regularly work long and unsocial hours yet remain positive and enthusiastic to continue to grow and improve

Survey Team

- A mix of highly utilised surveyors and engineers who work all over the UK
- Exceptional turnaround in team performance during 2007
- The survey team's performance has led to the award of additional design work
- The team regularly work long and unsocial hours yet remain positive and enthusiastic to continue to grow and improve

Comments from BEA Judges

- Impressive turnaround from 2006
- Strong leadership and good planning coupled with great flexibility and support from all team members
- The team have evident pride in their improved performance and are committed to continuing to improve

Electrification Team

- The electrification team is a blend of engineers of different grades and skills allowing flexibility and an ability to grow
- The team are focussed on service to their clients and consistently deliver to a high standard while looking for ways to improve
- The team exceeded all of their business targets in 2007 with less staff than planned
- Consistently good feedback from clients leading to repeat business

Electrification Team

- The electrification team is a blend of engineers of different grades and skills allowing flexibility and an ability to grow
- The team are focussed on service to their clients and consistently deliver to a high standard while looking for ways to improve
- The team exceeded all of their business targets in 2007 with less staff than planned
- Consistently good feedback from clients leading to repeat business

Comments from BEA Judges

- Strong resilient team with consistent performance at top end of spectrum
- Team have coped with the transition from one large project and loss of S&C programme by widening client base
- Clear desire to innovate and seek to continuously improve

Team of the Year

Bridges Team

Proposals Team

Survey Team

Electrification Team



CRIS BUSINESS EXCELLENCE AWARDS