

Corus Strip Products UK

Making a difference

Llanwern and Port Talbot Works

www.corusgroup.com

Care has been taken to ensure that this information is accurate, but Corus Group plc, including its subsidiaries, does not accept responsibility or liability for errors or information which is found to be misleading.

Copyright Corus UK Limited 2002
Design: Stills Design 8954
Paper: 50%TCF from managed plantations.
50% recycled fibres.

Business headquarters

Corus Strip Products UK
PO Box 42
Port Talbot
South Wales
SA13 2NG
UK
T: +44 (0)1639 871111
F: +44 (0)1639 872020

UK Sales office for commercial enquiries

Corus Strip Products UK
Midland House
New Road
Halesowen
West Midlands
B63 3HY
UK
T: +44 (0)121 5855522
F: +44 (0)121 5855241

Llanwern works

Corus Strip Products UK
Llanwern Works
Newport
South Wales
NP19 4QZ
UK

Newport station by rail.
M4 Junction 24 by road.

Port Talbot works

Corus Strip Products UK
Port Talbot Works
Port Talbot
South Wales
SA13 2NG
UK

Port Talbot Parkway by rail.
M4 Junction 38 by road.

Working together



The Corus works at Llanwern and Port Talbot together manufacture hot-rolled steel, cold-rolled steel and hot-dip galvanised steel.

These products make an important difference to the world in which we live.

Making a difference

Everything we use either has steel in it or has been processed using steel. Steel is not one product, but many. By changing the ingredients and the way strip steel is made, Corus can produce strip steel products that behave in special ways. Because steel can be made to perform in these different ways, it influences how end products like cars are designed and manufactured. The look of everyday products and what they can do are often the result of steel's capabilities.

Strip steel from Llanwern and Port Talbot works is used to make cars, drums, radiators, beverage cans and tubes, to name but a few products.

Steel is recyclable—it can be used again and again.

The works themselves recycle energy and by-products that arise during production and operate systems that protect the environment. Llanwern and Port Talbot works also maintain areas on site where wildlife can thrive.

The two plants work closely with the local communities.

At Corus, we're not just making steel, we're making a difference.





Making strip steel

Iron ore, limestone and coke (coal that has been distilled) are imported from around the world and used to make iron, which is then processed with small amounts of other elements to make steel slabs.

The slabs are passed while hot through sets of rolls to flatten them into strip. Some strip steel is further rolled while cold. Of course, the chemistry and mechanical processes are highly sophisticated and there are countless 'recipes' for producing strip steel that has very precise properties and uses. How easily the steel can be formed into shapes, how hard it is, how strong it is, and the smoothness or texture of its surface are some of the characteristics that can be determined. Llanwern can also apply a coating of zinc to

cold-rolled steel, which inhibits corrosion. The illustrations at the end of this brochure show the processes at the two works.

Products made with strip steel

Countless products are made with strip steel, but the main uses are for automotive vehicles, construction components, domestic appliances and packaging. The strip steels also go to other works in Corus where they are coated with metallic elements, paint, or plastic film, or are formed into tubes.

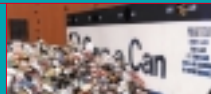
Part of Corus

Llanwern and Port Talbot works together make up Corus Strip Products UK, which is a business within the international metals company, Corus.

Corus manufactures, processes and distributes metals, as well as providing design, technology and consultancy services.

The company works closely with its customers and provides innovative design and processing solutions using a range of metals. Llanwern and Port Talbot play their part in this process by making steels that meet very particular needs. For example, they make a steel for cars that when supplied is highly formable, allowing it to be pressed into attractive shapes, but which strengthens when the subsequent paint finish is baked.





Making history

In 2002, Port Talbot works celebrated its centenary. In fact, iron working in the area goes back to the 13th century. The works is called Port Talbot owing to its dock, opened in 1837 and named after Christopher Rice Mansel Talbot of Margam, its principal sponsor. Later additions to Port Talbot works occurred in 1923, when Margam works was completed, and in 1951 when Abbey works was completed. Today, 2,900 Corus employees at Port Talbot works produce three million tonnes of high quality steel each year.

With the additional need for a new, fully integrated iron and steel works and a rolling mill, Llanwern—first called “Spencer works” after the chairman of Richard Thomas and Baldwins Limited—was completed in 1962.

Although Llanwern no longer produces liquid iron and steel, its 1,600 employees produce two million tonnes of steel coil each year.

Nowadays, Port Talbot and Llanwern operate as an integrated works, dedicated to delivering quality products and services.

Investment

Corus invests in the latest technology to produce world-class products and services. These investments include the continuous annealing processing line, blast furnace rebuild and coke oven refurbishment at Port Talbot and the slab receipt terminal at Llanwern.

The environment and sustainability

Corus is committed to protecting the environment by minimising the impact of its operations and products through the adoption of sustainable practices and continuous improvement in environmental performance.

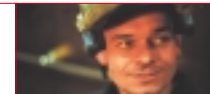
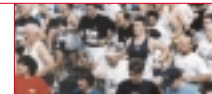
Steel is the world’s most recyclable and recycled material.

Corus advises designers on how to minimise the use of scarce natural resources while maximising the potential of low-energy, recyclable products.

Making a difference in the community

Corus is an integral part of the communities in which it operates and is committed to encouraging social and environmentally responsible initiatives.

The strong ties Corus has with the local community have arisen from a long history of close links between employees and other local residents.



The Corus *Partners in the Community* programme supports local projects in the community, maintains links with local partners and creates new relationships.

Education programmes that complement the national curriculum involve many employees across the region and support the learning and growth of hundreds of children. The two plants together welcome over 2,000 visitors each year who learn about the modern steel industry.

The people in Corus

The company is proud of its people and recognises their contribution to the success of the company.

In Corus, the emphasis is on training and education to ensure a highly skilled and qualified workforce that can deliver world-class performance. Llanwern and Port Talbot works develop their employees through operational training, modern apprenticeships, further and higher education, and training in information technology and management.

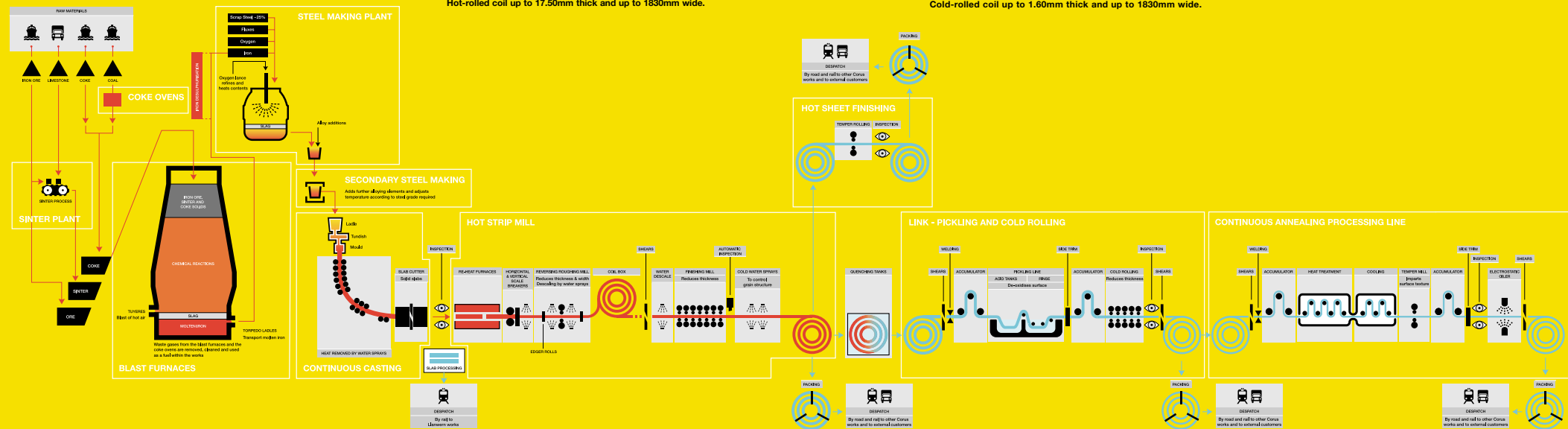
Port Talbot works

Employees: 2,900 Operating area: 2,000 acres

Iron and steel making

Hot-rolled products

Cold-rolled products

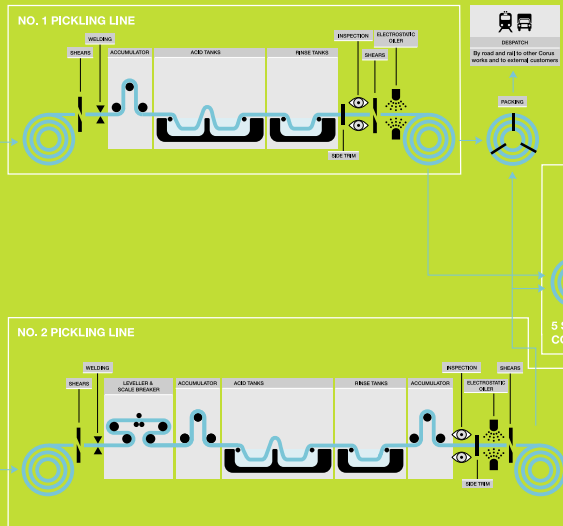
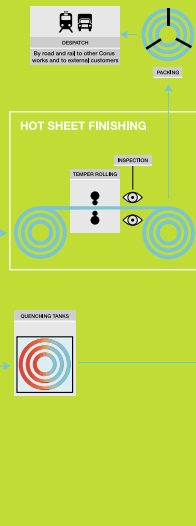
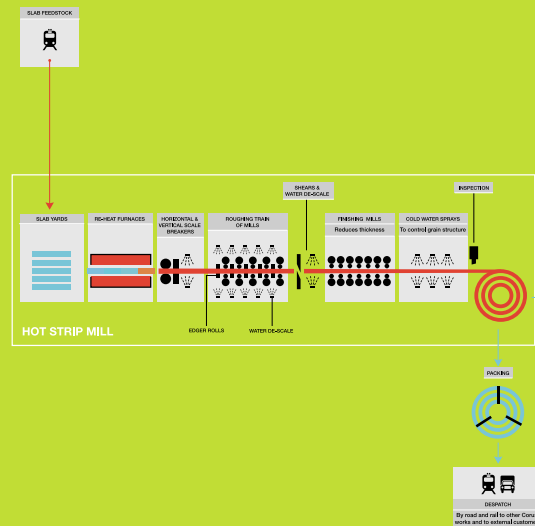


Llanwern works

Employees: 1,600 Operating area: 1,000 acres

Hot-rolled products

Hot-rolled coil up to 12.50mm thick and up to 1550mm wide.



Cold-rolled products and metallic-coated products

Cold-rolled coil up to 3.00mm thick and up to 1525mm wide. Galvanised steel up to 2.00mm thick and up to 1820mm wide.

