

TATA STEEL



Building envelope case study

Huskisson Dock, Liverpool

Client: Peel Ports

Installation contractor: Lester Fabrications & Cladding

Cladding system: R32 profile (roof) and C32 profile (walls)

Colorcoat® product: Colorcoat HPS200 Ultra® in Merlin Grey/Black

Originally constructed in 1960 and located in a very exposed, marine location in Liverpool's historic Huskisson Dock, this quarter of a mile long facility had fallen into disrepair.

Owners Peel Ports decided to give it a new lease of life with complete refurbishment of the external building envelope.

Refurbishment specialists Lester Fabrications and Cladding were appointed to carry out the work.

The building has now been fully restored and transformed, both in terms of appearance and weather protection, thanks to R32 and C32 profiles in Colorcoat HPS200 Ultra®.



Situated near the mouth of the celebrated and evocative River Mersey, Liverpool's historic Huskisson Dock dates back to 1852. Originally dealing with timber, it gradually developed as a grain trading centre and also provided berthing facilities for passenger ships on North American routes.

The dock was continually expanded, but suffered a huge setback in World War Two when 1000 tonnes of explosives on board the SS Malakand were ignited during an air raid. The incident sadly claimed four lives and resulted in ship debris being recovered 2.5 miles away!

Huskisson Dock was largely destroyed in the inferno and underwent extensive rebuilding after the war.

In 1960 a quarter of a mile long grain store was constructed, running along almost the entire length of the dock.

Over the years, the building had fallen into a state of disrepair. Owners Peel Ports decided to give it a new lease of life with complete refurbishment of the external building envelope.

Refurbishment specialists Lester Fabrications and Cladding were appointed to carry out the work.

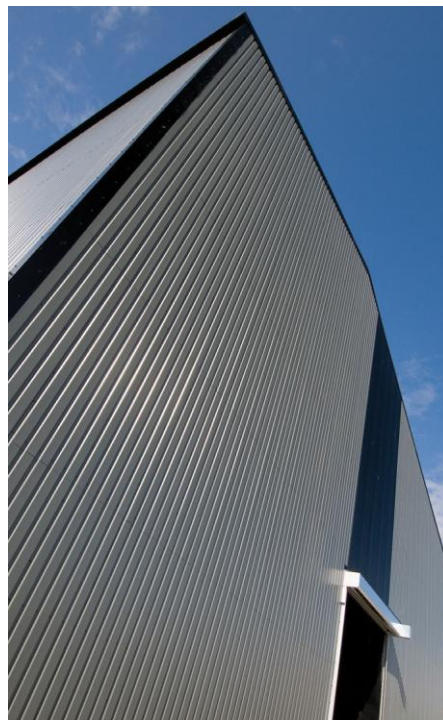
Steve Lester commented: "One of the main concerns in planning the project was to ensure that the external envelope was clad in a material that would be able to provide an effective long-term solution in a very exposed location and aggressive marine environment.

"We therefore recommended roof and wall cladding profiles by Tata Steel, in Colorcoat HPS200 Ultra®."

Backed by a 30 year coastal Confidex® guarantee and available in 40 standard colours, Colorcoat HPS200 Ultra® pre-finished steel combines outstanding performance with unrivalled reliability and impressive sustainability credentials. It is the ideal option for a building exposed to high winds and surrounded by salt water.

Made in the UK to ISO 14001, for a lower carbon footprint, Colorcoat HPS200 Ultra® is the most durable pre-finished steel on the market. It incorporates advanced coating technology, providing superior corrosion resistance, especially in challenging environments, with twice the colour and gloss retention of standard plastisol products.

Project managers at Peel Ports agreed with the assessment and recommendations of Steve Lester and his colleagues and ordered a total of 24,000m² of profiles in Colorcoat HPS200 Ultra®, consisting of the 0.9mm thick R32 profile on the roof and the 0.7mm thick C32 profile on the walls.



Colour choice was Merlin Grey for roof and walls. A contrasting Black finish was chosen for associated trims and flashings and above service doors.

Steve Lester and his team began to prepare the building for its new envelope by removing the existing profiled aluminium roof sheeting and cleaning the old purlins before they could accommodate the R32 profile.

"We then broke down the concrete between support columns on the lower half of the walls. This enabled us to incorporate rooflights to improve internal daylighting levels.

"We fixed miles and miles of new cladding rails to the structure to accept the new walls in the C32 profile."

Reflecting on the completed project, Steve Lester observed: "The roof and wall profiles look superb. The building is unrecognisable compared to what it looked like before refurbishment."

A spokesperson for Peel Ports commented: "We are really pleased with the refurbishment of the store at Huskisson Dock and would like to thank Tata Steel for their assistance in achieving this. The once derelict space was redeveloped to accommodate the growth in the Liverpool Port Business and we are delighted to see the store fully modernised and back in use."

"We are really pleased with the refurbishment and would like to thank Tata Steel for their assistance. The once derelict space was redeveloped to accommodate the growth in the Liverpool Port Business."

www.tatasteelconstruction.com

While care has been taken to ensure that the information contained in this publication is accurate, neither Tata Steel Europe Limited, nor its subsidiaries, accept responsibility or liability for errors or for information which is found to be misleading.

Colorcoat HPS200 Ultra, Confidex and Trisomet are registered trademarks of Tata Steel UK Limited.

Copyright 2016
Tata Steel Europe Limited