



R1 42 01 07 Technical Directive

Hydraulics-directive for suppliers, erection
companies, managers and users
Part 7: Selection measuring-, directing- and
control devices

Author: C. de Bruin

Issue: November 2003

Version: 3.0

Intended for the location IJmuiden

This is an unregistered document.

In case of future changes, amendments will not be sent to you.

The latest version can be retrieved from Intranet of Corus (projectnet).

Information on

Contents of document
Standardisation

PTC MTE WIT HPS
Standardisation office

tel. +31 (0)251-4 97927
tel. +31 (0)251-4 97693

Corus Services IJmuiden

R1 42 01 07

Hydraulics-directive for suppliers, erection
companies, managers and users
Part 7: Selection Measuring-, Directing- and
Control equipment

Corus Services IJmuiden

R1 42 01 07

Hydraulics-directive for suppliers, erection
companies, managers and users
Part 7: Selection Measuring-, Directing- and
Control equipment

Hydraulics-directive for suppliers, erection
companies, managers and users
Part 7: Selection Measuring-, Directing- and
Control equipment

Hydraulics-directive for suppliers, erection
companies, managers and users
Part 7:Selection Measuring-, Directing- and
Control equipment

Hydraulics-directive for suppliers, erection
companies, managers and users
Part 7: Selection Measuring-, Directing- and
Control equipment

Hydraulics-directive for suppliers, erection
companies, managers and users
Part 7: Selection Measuring-, Directing- and
Control equipment

7.2. Corus Services, Inuiden	R1 42 01 07	98
7.2.1. PRESSURE TRANSDUCERS AND PRESSURE SWITCHES	Hydraulics-directive for suppliers, erection companies, managers and users	
	Part 7: Selection Measuring-, Directing- and Control equipment	

Hydraulics-directive for suppliers, erection
companies, managers and users
Part 7: Selection Measuring-, Directing- and
Control equipment

Hydraulics-directive for suppliers, erection
companies, managers and users
Part 7: Selection Measuring-, Directing- and
Control equipment

Hydraulics-directive for suppliers, erection
companies, managers and users
Part 7: Selection Measuring-, Directing- and
Control equipment

Hydraulics-directive for suppliers, erection
companies, managers and users
Part 7: Selection Measuring-, Directing- and
Control equipment

Hydraulics-directive for suppliers, erection
companies, managers and users
Part 7:Selection Measuring-, Directing- and
Control equipment

Hydraulics-directive for suppliers, erection
companies, managers and users
Part 7: Selection Measuring-, Directing- and
Control equipment

7.5. Corus Services, IJmuiden	R1 42 01 07	238
TEMPERATURE MEASUREMENT (TEMPERATE SWITCHES)	Hydraulics-directive for suppliers, erection companies, managers and users	
	Part 7: Selection Measuring-, Directing- and Control equipment	

Hydraulics-directive for suppliers, erection
companies, managers and users
Part 7: Selection Measuring-, Directing- and
Control equipment

Hydraulics-directive for suppliers, erection
companies, managers and users
Part 7: Selection Measuring-, Directing- and
Control equipment

7.6. Corus Services Unvinden	R1 42 01 07	298
TEMPERATURE MEASUREMENT (DIAL THERMOMETERS)	Hydraulics-directive for suppliers, erection companies, managers and users	
	Part 7:Selection Measuring-, Directing- and Control equipment	

Hydraulics-directive for suppliers, erection
companies, managers and users
Part 7: Selection Measuring-, Directing- and
Control equipment

Corus Services Llmuiden
7.6.2. For tanks up to 1000 dm³

R1 42 01 07 321

Hydraulics-directive for suppliers, erection
companies, managers and users
Part 7: Selection Measuring-, Directing- and
Control equipment

Hydraulics-directive for suppliers, erection
companies, managers and users
Part 7: Selection Measuring-, Directing- and
Control equipment

Hydraulics-directive for suppliers, erection
companies, managers and users
Part 7:Selection Measuring-, Directing- and
Control equipment

Hydraulics-directive for suppliers, erection
companies, managers and users
Part 7: Selection Measuring-, Directing- and
Control equipment

Hydraulics-directive for suppliers, erection
companies, managers and users
Part 7: Selection Measuring-, Directing- and
Control equipment

Hydraulics-directive for suppliers, erection
companies, managers and users
Part 7: Selection Measuring-, Directing- and
Control equipment

Hydraulics-directive for suppliers, erection
companies, managers and users
Part 7: Selection Measuring-, Directing- and
Control equipment

Hydraulics-directive for suppliers, erection
companies, managers and users
Part 7: Selection Measuring-, Directing- and
Control equipment

Hydraulics-directive for suppliers, erection
companies, managers and users
Part 7: Selection Measuring-, Directing- and
Control equipment

Hydraulics-directive for suppliers, erection
companies, managers and users
Part 7:Selection Measuring-, Directing- and
Control equipment

Corus Services IJmuiden

R1 42 01 07

Hydraulics-directive for suppliers, erection
companies, managers and users
Part 7: Selection Measuring-, Directing- and
Control equipment

Corus Services IJmuiden
Blank page

R1 42 01 07
Hydraulics-directive for suppliers, erection
companies, managers and users
Part 7: Selection Measuring-, Directing- and
Control equipment

Corus Services IJmuiden

R1 42 01 07

Hydraulics-directive for suppliers, erection
companies, managers and users
Part 7: Selection Measuring-, Directing- and
Control equipment

7.1. **Parts for pressure measuring devices**

R1 42 01 07

Hydraulics-directive for suppliers, erection
companies, managers and users
Part 7: Selection Measuring-, Directing- and
Control equipment

Corus Services IJmuiden
7.1.1. *Measure coupling (testpoint)*

R1 42 01 07
Hydraulics-directive for suppliers, erection
companies, managers and users
Part 7: Selection Measuring-, Directing- and
Control equipment

Corus Services Limuiden
Dimensions in mm

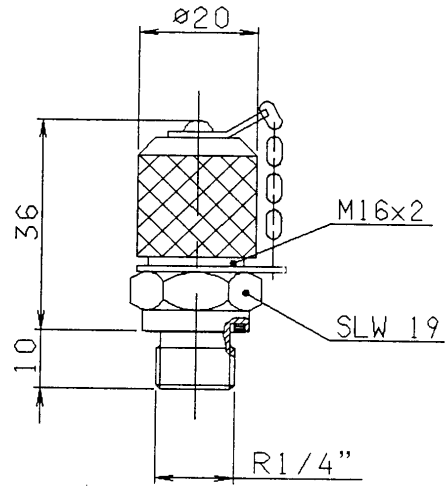
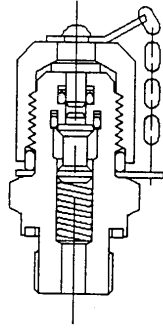
R1 42 01 07
Hydraulics-directive for suppliers, erection
companies, managers and users
Part 7:Selection Measuring-, Directing- and
Control equipment

Corus Services IJmuiden

Figure 7.1

R1 42 01 07

Hydraulics-directive for suppliers, erection
companies, managers and users
Part 7: Selection Measuring-, Directing- and
Control equipment



iers, erection
d users
irecting- and
t

Corus Services IJmuiden

R1 42 01 07

Hydraulics-directive for suppliers, erection
companies, managers and users
Part 7: Selection Measuring-, Directing- and
Control equipment

Corus Services Imuiden
Material: Zinc plated steel, yellow chromium plated.

R1 42 01 07

Hydraulics-directive for suppliers, erection
companies, managers and users
Part 7:Selection Measuring-, Directing- and
Control equipment

Corus Services Limbiden

Max. pressure: 630 bar (under pressure, connection is possible up to and including 400 bar)

R1.42.01.07:
Hydraulics-directive for suppliers, erection companies, managers and users
Part 7: Selection Measuring-, Directing- and Control equipment

Corus Services IJmuiden
bar).

R1 42 01 07

Hydraulics-directive for suppliers, erection
companies, managers and users
Part 7: Selection Measuring-, Directing- and
Control equipment

Corus Services IJmuiden
Max. temperature: 90 °C.

R1 42 01 07
Hydraulics-directive for suppliers, erection
companies, managers and users
Part 7: Selection Measuring-, Directing- and
Control equipment

Corus Services IJmuiden
Metal cap.

R1 42 01 07
Hydraulics-directive for suppliers, erection
companies, managers and users
Part 7: Selection Measuring-, Directing- and
Control equipment

Corus Services Hmuiden
Valve seal Viton.

R1 42 01 07

Hydraulics-directive for suppliers, erection
companies, managers and users
Part 7: Selection Measuring-, Directing- and
Control equipment

Corus Services, Umuiden
Soft seal Perbunan.

R1 42 01 07

Hydraulics-directive for suppliers, erection
companies, managers and users
Part 7: Selection Measuring-, Directing- and
Control equipment

Corus Services Uvuiden
This type is only suitable for mineral oil.

R1 42 01 07
Hydraulics-directive for suppliers, erection
companies, managers and users
Part 7: Selection Measuring-, Directing- and
Control equipment

Corus Services IJmuiden

R1 42 01 07

Hydraulics-directive for suppliers, erection
companies, managers and users
Part 7: Selection Measuring-, Directing- and
Control equipment

Corus Services Limbiden
Ordering numbers.

R1 42 01 07

Hydraulics-directive for suppliers, erection
companies, managers and users
Part 7: Selection Measuring-, Directing- and
Control equipment

Corus Services Uluideu
Hydro technique : 2103-01-18.00

R1 42 01 07
Hydraulics-directive for suppliers, erection
companies, managers and users
Part 7: Selection Measuring-, Directing- and
Control equipment

Corus Services IJmuiden EMA3/R1/4" -ed
E.O.

R1 42 01 07
Hydraulics-directive for suppliers, erection
companies, managers and users
Part 7: Selection Measuring-, Directing- and
Control equipment

Hydraulics-directive for suppliers, erection
companies, managers and users
Part 7: Selection Measuring-, Directing- and
Control equipment

Corus Services IJmuiden

R1 42 01 07

Hydraulics-directive for suppliers, erection
companies, managers and users
Part 7: Selection Measuring-, Directing- and
Control equipment

Corus Services IJmuiden

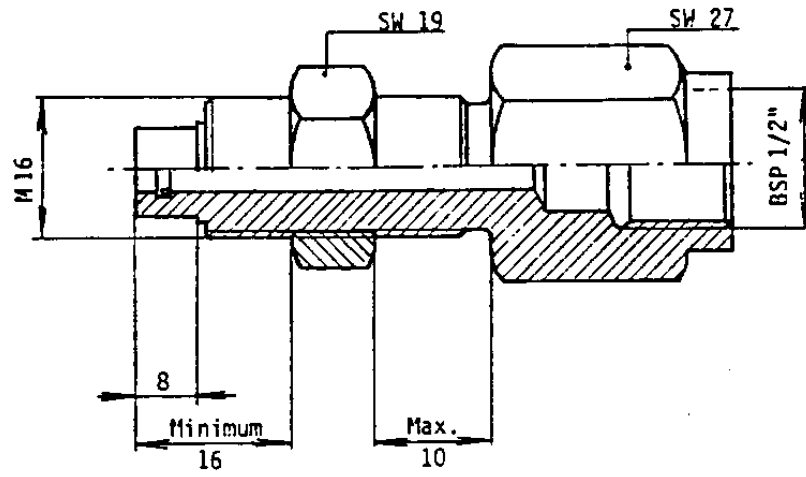
R1 42 01 07

Hydraulics-directive for suppliers, erection
companies, managers and users
Part 7: Selection Measuring-, Directing- and
Control equipment

Hydraulics-directive for suppliers, erection
companies, managers and users
Part 7: Selection Measuring-, Directing- and
Control equipment

Corus Services Limuiden
Dimensions in mm

R1 42 01 07
Hydraulics-directive for suppliers, erection
companies, managers and users
Part 7:Selection Measuring-, Directing- and
Control equipment



s, erection
sers
cting- and

Corus Services IJmuiden

R1 42 01 07

Hydraulics-directive for suppliers, erection
companies, managers and users
Part 7: Selection Measuring-, Directing- and
Control equipment

Corus Services Imuiden
Material: Zinc plated steel, yellow chromium plated.

R1 42 01 07

Hydraulics-directive for suppliers, erection
companies, managers and users
Part 7: Selection Measuring-, Directing- and
Control equipment

Corus Services Limbden
Max. pressure: 630 bar.

R1 42 01 07

Hydraulics-directive for suppliers, erection
companies, managers and users
Part 7: Selection Measuring-, Directing- and
Control equipment

Corus Services Limbden
Max. temperature: 90 °C.

R1 42 01 07
Hydraulics-directive for suppliers, erection
companies, managers and users
Part 7: Selection Measuring-, Directing- and
Control equipment

Corus Services Hmuiden
Valve seal Viton.

R1 42 01 07

Hydraulics-directive for suppliers, erection
companies, managers and users
Part 7: Selection Measuring-, Directing- and
Control equipment

Corus Services Uvendien
This type is only suitable for mineral oil.

R1 42 01 07
Hydraulics-directive for suppliers, erection
companies, managers and users
Part 7:Selection Measuring-, Directing- and
Control equipment

Corus Services IJmuiden

R1 42 01 07

Hydraulics-directive for suppliers, erection
companies, managers and users
Part 7: Selection Measuring-, Directing- and
Control equipment

Corus Services Limbiden
Ordering numbers:

R1 42 01 07

Hydraulics-directive for suppliers, erection
companies, managers and users
Part 7: Selection Measuring-, Directing- and
Control equipment

Corus Services, IJmuiden
Hydro technique : 2103-05-02.00

R1 42 01 07
Hydraulics-directive for suppliers, erection
companies, managers and users
Part 7: Selection Measuring-, Directing- and
Control equipment

Corus Services IJmuiden
E.O. MAV 1/2" -MA3

R1 42 01 07
Hydraulics-directive for suppliers, erection
companies, managers and users
Part 7: Selection Measuring-, Directing- and
Control equipment

Corus Services IJmuiden
AVII
2103-05-02.00

R1 42 01 07
Hydraulics-directive for suppliers, erection
companies, managers and users
Part 7: Selection Measuring-, Directing- and
Control equipment

Corus Services Uluuuden
7.1.3. *Hose used for measuring*

R1 42 01 07

Hydraulics-directive for suppliers, erection
companies, managers and users
Part 7: Selection Measuring-, Directing- and
Control equipment

Corus Services-Ilmuiden

Hose used for measuring which fits measuring coupling and pressure gauge connection.

R1.42.01.07

Hydraulics-directive for suppliers, erection companies, managers and users
Part 7: Selection Measuring-, Directing- and Control equipment

Corus Services IJmuiden

R1 42 01 07

Hydraulics-directive for suppliers, erection
companies, managers and users
Part 7: Selection Measuring-, Directing- and
Control equipment

Corus Services, Umuïden
Standard length.

R1 42 01 07

Hydraulics-directive for suppliers, erection
companies, managers and users
Part 7: Selection Measuring-, Directing- and
Control equipment

Corus Services Uniden
E=1000-1500-2500 mm.

R1 42 01 07
Hydraulics-directive for suppliers, erection
companies, managers and users
Part 7:Selection Measuring-, Directing- and
Control equipment

Corus Services IJmuiden

R1 42 01 07

Hydraulics-directive for suppliers, erection
companies, managers and users
Part 7: Selection Measuring-, Directing- and
Control equipment

Corus Services Uvuiden
Coupling model.

R1 42 01 07

Hydraulics-directive for suppliers, erection
companies, managers and users
Part 7: Selection Measuring-, Directing- and
Control equipment

Corus Services Umuiden
Thread connection M16 with cap ø 20 serrated

R1 42 01 07

Hydraulics-directive for suppliers, erection
companies, managers and users
Part 7: Selection Measuring-, Directing- and
Control equipment

Corus Services Imuiden
Material: Zinc plated steel, yellow chromium plated.

R1 42 01 07

Hydraulics-directive for suppliers, erection
companies, managers and users
Part 7: Selection Measuring-, Directing- and
Control equipment

Corus Services Limbden
Max. pressure: 630 bar.

R1 42 01 07

Hydraulics-directive for suppliers, erection
companies, managers and users
Part 7: Selection Measuring-, Directing- and
Control equipment

Corus Services Limbden
Max. temperature: 90 °C.

R1 42 01 07
Hydraulics-directive for suppliers, erection
companies, managers and users
Part 7: Selection Measuring-, Directing- and
Control equipment

Corus Services Unuiden
Minimal bending $r = 20$ mm.

R1 42 01 07
Hydraulics-directive for suppliers, erection
companies, managers and users
Part 7: Selection Measuring-, Directing- and
Control equipment

Corus Services IJmuiden

R1 42 01 07

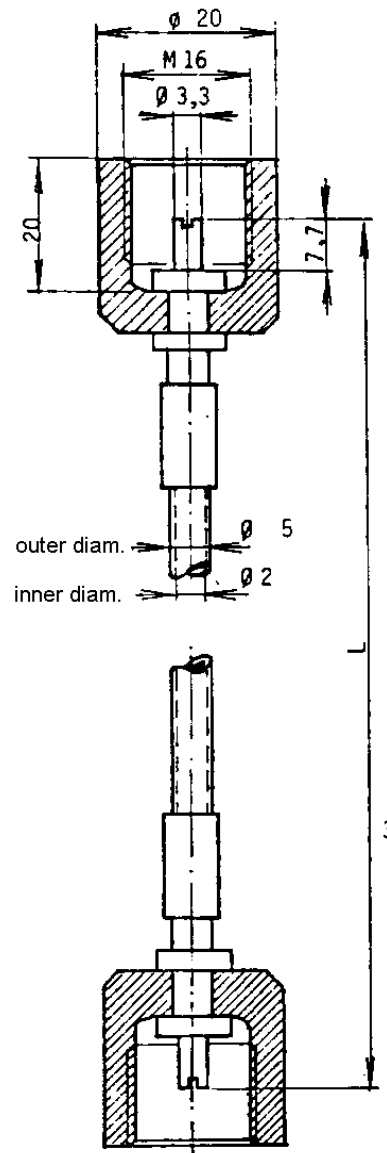
Hydraulics-directive for suppliers, erection
companies, managers and users
Part 7: Selection Measuring-, Directing- and
Control equipment

Corus Services IJmuiden

Figure 7.3

R1 42 01 07

Hydraulics-directive for suppliers, erection
companies, managers and users
Part 7: Selection Measuring-, Directing- and
Control equipment



Corus Services IJmuiden

R1 42 01 07

Hydraulics-directive for suppliers, erection
companies, managers and users
Part 7: Selection Measuring-, Directing- and
Control equipment

Corus Services Limbiden
Ordering numbers:

R1 42 01 07

Hydraulics-directive for suppliers, erection
companies, managers and users
Part 7: Selection Measuring-, Directing- and
Control equipment

Corus Services, IJmuiden
Hydro technique

R1 42 01 07
Hydraulics-directive for suppliers, erection
companies, managers and users
Part 7: Selection Measuring-, Directing- and
Control equipment

Corus Services Uuiden
E=1000 mm S110-AC-AC-0100

R1 42 01 07
Hydraulics-directive for suppliers, erection
companies, managers and users
Part 7:Selection Measuring-, Directing- and
Control equipment

Corus Services, IJmuiden
E=1500 mm S110-AC-AC-0150

R1 42 01 07
Hydraulics-directive for suppliers, erection
companies, managers and users
Part 7: Selection Measuring-, Directing- and
Control equipment

Corus Services Uuiden
E= 2500 mm S110-AC-AC-0250

R1 42 01 07
Hydraulics-directive for suppliers, erection
companies, managers and users
Part 7: Selection Measuring-, Directing- and
Control equipment

Corus Services IJmuiden

R1 42 01 07

Hydraulics-directive for suppliers, erection
companies, managers and users
Part 7: Selection Measuring-, Directing- and
Control equipment

Corus Services IJmuiden
E.O.

AVIT: R1 42 01 07
Hydraulics-directive for suppliers, erection
companies, managers and users
Part 7: Selection Measuring-, Directing- and
Control equipment

Corus Services, IJmuiden
E=1000 mm SMA3-1000

R1 42.01.07
Mime 10-SCL 0100
L= 1000 mm
Hydraulics-directive for suppliers, erection
companies, managers and users
Part 7: Selection Measuring-, Directing- and
Control equipment

Corus Services Uuiden SMA3-1500
L= 1500 mm

R1 42.01.07
Mime 10-SCL 0150
L= 1500 mm
Hydraulics-directive for suppliers, erection
companies, managers and users
Part 7: Selection Measuring-, Directing- and
Control equipment

Corus Services, IJmuiden
L= 2500 mm SMA3-2500

R1 42.01.07
Mime 10-SCL 0250
Hydraulics-directive for suppliers, erection
companies, managers and users
Part 7: Selection Measuring-, Directing- and
Control equipment

Corus Services IJmuiden

R1 42 01 07

Hydraulics-directive for suppliers, erection
companies, managers and users
Part 7: Selection Measuring-, Directing- and
Control equipment

Hydraulics-directive for suppliers, erection companies, managers and users
Part 7: Selection Measuring-, Directing- and Control equipment

FOR PRESSURE TRANSDUCERS PLEASE NOTE THE FOLLOWING:

Hydraulics-directive for suppliers, erection companies, managers and users
Part 7:Selection Measuring-, Directing- and Control equipment

Corus Services Limbieden

For permanent application of pressure transducers and displays please contact the

R1.42.01.07

Hydraulics-directive for suppliers, erection companies, managers and users

Part 7: Selection Measuring-, Directing- and Control equipment

Corus Services IJmuiden

hydraulic engineer involved. The rest of this document covers R1.42.01.07 pressure switches.
Hydraulics-directive for suppliers, erection companies, managers and users
Part 7: Selection Measuring-, Directing- and Control equipment

Hydraulics-directive for suppliers, erection
companies, managers and users
Part 7: Selection Measuring-, Directing- and
Control equipment

Corus Services Umliden

Pressure switches are used for measuring pressures in a hydraulic circuit and switching an hydraulics-directive for suppliers, erection companies, managers and users

R1:42:01.07

Part 7:Selection Measuring-, Directing- and Control equipment

Corus Services Limbuden
open-close relay at certain (rising or falling) pressures.

R1 42 01 07

Hydraulics-directive for suppliers, erection
companies, managers and users
Part 7: Selection Measuring-, Directing- and
Control equipment

Corus Services Umuiden
7.2.2. *Electronic pressure switches*

R1 42 01 07

Hydraulics-directive for suppliers, erection
companies, managers and users
Part 7: Selection Measuring-, Directing- and
Control equipment

Corus Services IJmuiden
Type

R1 42 01 07
Hydraulics-directive for suppliers, erection
companies, managers and users
Part 7: Selection Measuring-, Directing- and
Control equipment

Corus Services IJmuiden

R1 42 01 07

Hydraulics-directive for suppliers, erection
companies, managers and users
Part 7: Selection Measuring-, Directing- and
Control equipment

Corus Services Unmuiden
Type EDS 1600 is manufacturer Hydac.

R1 42 01 07
Hydraulics-directive for suppliers, erection
companies, managers and users
Part 7:Selection Measuring-, Directing- and
Control equipment

Corus Services IJmuiden

R1 42 01 07

Hydraulics-directive for suppliers, erection
companies, managers and users
Part 7: Selection Measuring-, Directing- and
Control equipment

Corus Services Uv
Range (bar)

Max. pressure (bar)

R142.01.07

Digital read-out (bar)

Hydraulics-directive for suppliers, erection
companies, managers and users
Part 7: Selection Measuring-, Directing- and
Control equipment

Corus Services IJmuiden

100

R1 42.01.07
60.0-50.0
Hydraulics-directive for suppliers, erection
companies, managers and users
Part 7: Selection Measuring-, Directing- and
Control equipment

Corus Services IJmuiden

6-100

200

R1 43.01.07.9

60.0-99.9

Hydraulics-directive for suppliers, erection
companies, managers and users
Part 7: Selection Measuring-, Directing- and
Control equipment

Corus Services IJmuiden

6-200

400

R1 42 01 07

600-200

Hydraulics-directive for suppliers, erection
companies, managers and users
Part 7: Selection Measuring-, Directing- and
Control equipment

Corus Services IJmuiden

6-450

900

R1 42 01 07

600-450

Hydraulics-directive for suppliers, erection
companies, managers and users
Part 7: Selection Measuring-, Directing- and
Control equipment

Corus Services IJmuiden

R1 42 01 07

Hydraulics-directive for suppliers, erection
companies, managers and users
Part 7: Selection Measuring-, Directing- and
Control equipment

Corus Services Umuiden
For accuracy's, see electrical data.

R1 42 01 07
Hydraulics-directive for suppliers, erection
companies, managers and users
Part 7: Selection Measuring-, Directing- and
Control equipment

Corus Services IJmuiden

R1 42 01 07

Hydraulics-directive for suppliers, erection
companies, managers and users
Part 7: Selection Measuring-, Directing- and
Control equipment

Corus Services II muiden
General data

R1 42 01 07

Hydraulics-directive for suppliers, erection
companies, managers and users
Part 7: Selection Measuring-, Directing- and
Control equipment

Corus Services-Umuiden

The device is on a pressure transducer with electronics and a number of relays.

R1.42.01.07

Hydraulics-directive for suppliers, erection companies, managers and users

Part 7:Selection Measuring-, Directing- and Control equipment

Corus Services IJmuiden

R1 42 01 07

Hydraulics-directive for suppliers, erection
companies, managers and users
Part 7: Selection Measuring-, Directing- and
Control equipment

Corus Services IJmuiden
Temperature compensation is included.

R1 42 01 07
Hydraulics-directive for suppliers, erection
companies, managers and users
Part 7: Selection Measuring-, Directing- and
Control equipment

Corus Services IJmuiden

R1 42 01 07

Hydraulics-directive for suppliers, erection
companies, managers and users
Part 7: Selection Measuring-, Directing- and
Control equipment

Corus Services, Umuideu

Digital display with 3 numbers shows pressure or set points of switches.

R1.42.01.07

Hydraulics-directive for suppliers, erection companies, managers and users
Part 7: Selection Measuring-, Directing- and Control equipment

Corus Services IJmuiden

R1 42 01 07

Hydraulics-directive for suppliers, erection
companies, managers and users
Part 7: Selection Measuring-, Directing- and
Control equipment

Corus Services Ilmuiden
Hysteresis is adjustable (one adjustment for all switches).

R1 42 01 07

Hydraulics-directive for suppliers, erection
companies, managers and users
Part 7: Selection Measuring-, Directing- and
Control equipment

Corus Services IJmuiden

R1 42 01 07

Hydraulics-directive for suppliers, erection
companies, managers and users
Part 7: Selection Measuring-, Directing- and
Control equipment

Corus Services IJmuiden

R1 42 01 07

Hydraulics-directive for suppliers, erection
companies, managers and users
Part 7: Selection Measuring-, Directing- and
Control equipment

Corus Services IJmuiden
Hydraulic data

R1 42 01 07

Hydraulics-directive for suppliers, erection
companies, managers and users
Part 7: Selection Measuring-, Directing- and
Control equipment

Corus Services IJmuiden

R1 42 01 07

Hydraulics-directive for suppliers, erection
companies, managers and users
Part 7: Selection Measuring-, Directing- and
Control equipment

Corus Services IJmuiden
Connecting port

R142 01 07
: G1/4" int., DIN 3852, form X
Hydraulics-directive for suppliers, erection
companies, managers and users
Part 7: Selection Measuring-, Directing- and
Control equipment

Corus Services IJmuiden
Pressure connection

: RVS 1.4301 R1 42 01 07
Hydraulics-directive for suppliers, erection
companies, managers and users
Part 7: Selection Measuring-, Directing- and
Control equipment

Corus Services IJmuiden
Volume

: 1000 mm³ R1 42 01 07
Hydraulics-directive for suppliers, erection
companies, managers and users
Part 7: Selection Measuring-, Directing- and
Control equipment

Corus Services IJmuiden

Mass

: 0,8 kg. R1 42 01 07

Hydraulics-directive for suppliers, erection
companies, managers and users
Part 7: Selection Measuring-, Directing- and
Control equipment

Corus Services IJmuiden

R1 42 01 07

Hydraulics-directive for suppliers, erection
companies, managers and users
Part 7: Selection Measuring-, Directing- and
Control equipment

Corus Services Umluiden
Electrical data

R1 42 01 07
Hydraulics-directive for suppliers, erection
companies, managers and users
Part 7: Selection Measuring-, Directing- and
Control equipment

Corus Services IJmuiden

R1 42 01 07

Hydraulics-directive for suppliers, erection
companies, managers and users
Part 7: Selection Measuring-, Directing- and
Control equipment

Corus Services, Umuïden
Supply Voltage

R1 42 01 07
: 20-32 VDC
Hydraulics-directive for suppliers, erection
companies, managers and users
Part 7: Selection Measuring-, Directing- and
Control equipment

Corus Services IJmuiden
Power consumption

: 220 mA R1 42 01 07
Hydraulics-directive for suppliers, erection
companies, managers and users
Part 7: Selection Measuring-, Directing- and
Control equipment

Corus Services IJmuiden
Linearity

R1.42.01.07
: 0,5% full scale (at 25 °C)
Hydraulics-directive for suppliers, erection
companies, managers and users
Part 7: Selection Measuring-, Directing- and
Control equipment

Corus Services II
Medium temperature compensation

: 20-70 °C R1 42 01 07
Hydraulics-directive for suppliers, erection
companies, managers and users
Part 7: Selection Measuring-, Directing- and
Control equipment

Corus Services IJmuiden
Temperature compensation electronics

: 0-50 °C R1 42 01 07
Hydraulics-directive for suppliers, erection
companies, managers and users
Part 7: Selection Measuring-, Directing- and
Control equipment

Corus Services Limbiden
Temperature drift

R142-01 07
: max. 0,015%/K
Hydraulics-directive for suppliers, erection
companies, managers and users
Part 7: Selection Measuring-, Directing- and
Control equipment

Corus Services Uvuiden
Load margin

:100% R1 42 01 07
Hydraulics-directive for suppliers, erection
companies, managers and users
Part 7: Selection Measuring-, Directing- and
Control equipment

Corus Services IJmuiden
Hysteresis

R1 42 01 07
: 0,5-20% full scale, adjustable all
Hydraulics-directive for suppliers, erection
companies, managers and users
Part 7: Selection Measuring-, Directing- and
Control equipment

Corus Services IJmuiden

R1.42 01 07
relays together
Hydraulics-directive for suppliers, erection
companies, managers and users
Part 7: Selection Measuring-, Directing- and
Control equipment

Corus Services IJmuiden
Analogue output

: 4-20 mA R1 42 01 07
Hydraulics-directive for suppliers, erection
companies, managers and users
Part 7: Selection Measuring-, Directing- and
Control equipment

Corus Services IJmuiden
Electrical connection

R1.42.01.07
: 14 poles plug terminal
Hydraulics-directive for suppliers, erection
companies, managers and users
Part 7: Selection Measuring-, Directing- and
Control equipment

Corus Services IJmuiden
Cord connection

: 2x PG11 R1 42 01 07
Hydraulics-directive for suppliers, erection
companies, managers and users
Part 7: Selection Measuring-, Directing- and
Control equipment

Corus Services Uv
Conductors

: 1,5 mm² R1 42 01 07
Hydraulics-directive for suppliers, erection
companies, managers and users
Part 7: Selection Measuring-, Directing- and
Control equipment

Corus Services Unmuiden
Protection class

: IP 65 R1 42 01 07
Hydraulics-directive for suppliers, erection
companies, managers and users
Part 7: Selection Measuring-, Directing- and
Control equipment

Corus Services IJmuiden

R1 42 01 07

Hydraulics-directive for suppliers, erection
companies, managers and users
Part 7: Selection Measuring-, Directing- and
Control equipment

Corus Services IJmuiden
Relays data

R1 42 01 07
Hydraulics-directive for suppliers, erection
companies, managers and users
Part 7: Selection Measuring-, Directing- and
Control equipment

Corus Services IJmuiden

R1 42 01 07

Hydraulics-directive for suppliers, erection
companies, managers and users
Part 7: Selection Measuring-, Directing- and
Control equipment

Corus Services IJmuiden

Number

R1.42.01.07
: 4 (relay 1+2 and 3+4 With common
Hydraulics-directive for suppliers, erection
companies, managers and users
Part 7: Selection Measuring-, Directing- and
Control equipment

Corus Services IJmuiden

R1 42 01 07
middle contact)
Hydraulics-directive for suppliers, erection
companies, managers and users
Part 7: Selection Measuring-, Directing- and
Control equipment

Corus Services IJmuiden
Contact

R1.42.01.07
: make and break contacts
Hydraulics-directive for suppliers, erection
companies, managers and users
Part 7: Selection Measuring-, Directing- and
Control equipment

Corus Services IJmuiden
Voltage

R1 42 01 07
: max. 250 VAC
Hydraulics-directive for suppliers, erection
companies, managers and users
Part 7: Selection Measuring-, Directing- and
Control equipment

Corus Services IJmuiden
Current

: 2A R1 42 01 07
Hydraulics-directive for suppliers, erection
companies, managers and users
Part 7: Selection Measuring-, Directing- and
Control equipment

Corus Services IJmuiden
Power

: 400 VA, 50 W R1 42 01 07
Hydraulics-directive for suppliers, erection
companies, managers and users
Part 7: Selection Measuring-, Directing- and
Control equipment

Corus Services IJmuiden
Resistance

: < 50 m Ohm R1 42 01 07
Hydraulics-directive for suppliers, erection
companies, managers and users
Part 7: Selection Measuring-, Directing- and
Control equipment

Corus Services Umu
Switch time

: ca. 6 ms R1 42 01 07
Hydraulics-directive for suppliers, erection
companies, managers and users
Part 7: Selection Measuring-, Directing- and
Control equipment

Corus Services, Umuiden
Mechanical life time

R1.42 01 07
: 50 million shifts
Hydraulics-directive for suppliers, erection
companies, managers and users
Part 7: Selection Measuring-, Directing- and
Control equipment

Corus Services IJmuiden

R1 42 01 07

Hydraulics-directive for suppliers, erection
companies, managers and users
Part 7: Selection Measuring-, Directing- and
Control equipment

Corus Services IJmuiden

R1 42 01 07

Hydraulics-directive for suppliers, erection
companies, managers and users
Part 7: Selection Measuring-, Directing- and
Control equipment

Corus Services Umeiden
Ordering specifications

R1 42 01 07
Hydraulics-directive for suppliers, erection
companies, managers and users
Part 7: Selection Measuring-, Directing- and
Control equipment

Corus Services IJmuiden

R1 42 01 07

Hydraulics-directive for suppliers, erection
companies, managers and users
Part 7: Selection Measuring-, Directing- and
Control equipment

Corus Services Umladen
EDS 1691-P-C-*** - 000

R1 42 01 07
Hydraulics-directive for suppliers, erection
companies, managers and users
Part 7:Selection Measuring-, Directing- and
Control equipment

Corus Services IJmuiden

R1 42 01 07

Hydraulics-directive for suppliers, erection
companies, managers and users
Part 7: Selection Measuring-, Directing- and
Control equipment

Corus Services IJmuiden
Range (bar)

R1 42 01 07
Hydraulics-directive for suppliers, erection
companies, managers and users
Part 7: Selection Measuring-, Directing- and
Control equipment

Corus Services Limited
050

R1 42 01 07
Hydraulics-directive for suppliers, erection
companies, managers and users
Part 7: Selection Measuring-, Directing- and
Control equipment

Corus Services Limited
0-100 *** = 100

R1 42 01 07
Hydraulics-directive for suppliers, erection
companies, managers and users
Part 7:Selection Measuring-, Directing- and
Control equipment

Corus Services Limited
0200 200

R1 42 01 07
Hydraulics-directive for suppliers, erection
companies, managers and users
Part 7:Selection Measuring-, Directing- and
Control equipment

Corus Services Limited
0-450 *** = 450

R1 42 01 07
Hydraulics-directive for suppliers, erection
companies, managers and users
Part 7:Selection Measuring-, Directing- and
Control equipment

Corus Services IJmuiden

R1 42 01 07

Hydraulics-directive for suppliers, erection
companies, managers and users
Part 7: Selection Measuring-, Directing- and
Control equipment

Corus Services, IJmuiden
Electrical circuit diagram

R1 42 01 07
Hydraulics-directive for suppliers, erection
companies, managers and users
Part 7: Selection Measuring-, Directing- and
Control equipment

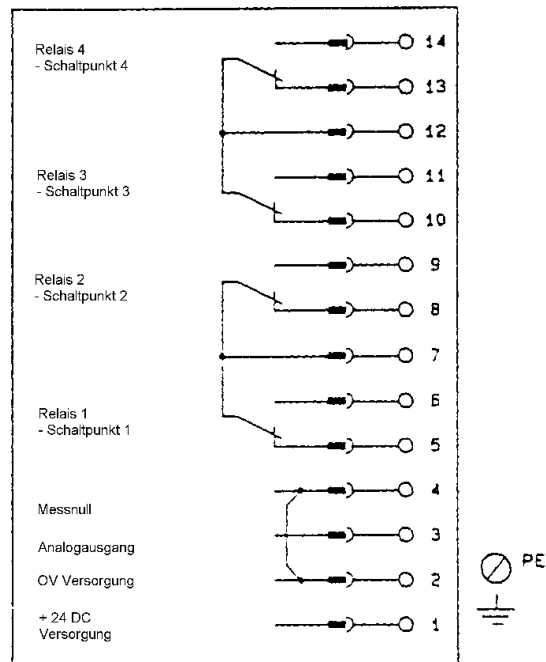
Corus Services IJmuiden

Figure 7.4

R1 42 01 07

Hydraulics-directive for suppliers, erection
companies, managers and users
Part 7: Selection Measuring-, Directing- and
Control equipment

r suppliers, erection
gers and users
ring-, Directing- and
quipment



Corus Services IJmuiden

R1 42 01 07

Hydraulics-directive for suppliers, erection
companies, managers and users
Part 7: Selection Measuring-, Directing- and
Control equipment

Corus Services IJmuiden

R1 42 01 07

Hydraulics-directive for suppliers, erection
companies, managers and users
Part 7: Selection Measuring-, Directing- and
Control equipment

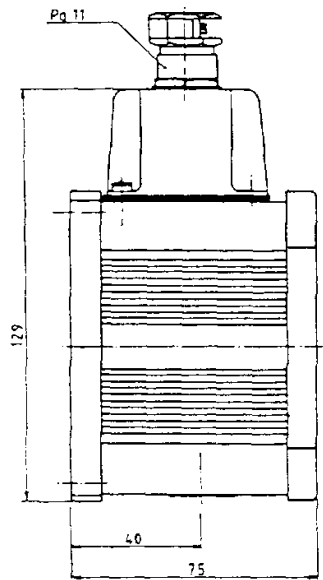
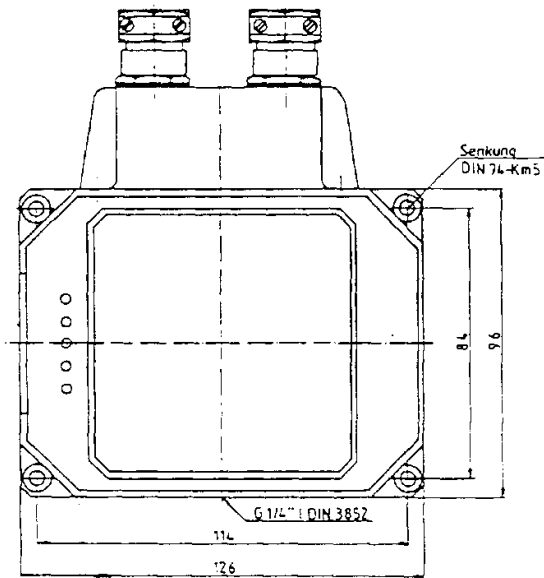
Corus Services IJmuiden
Dimensions

R1 42 01 07
Hydraulics-directive for suppliers, erection
companies, managers and users
Part 7: Selection Measuring-, Directing- and
Control equipment

Corus Services IJmuiden
Figure 7.5

R1 42 01 07
Hydraulics-directive for suppliers, erection
companies, managers and users
Part 7: Selection Measuring-, Directing- and
Control equipment

Cor



on
nd

Corus Services IJmuiden

R1 42 01 07

Hydraulics-directive for suppliers, erection
companies, managers and users
Part 7: Selection Measuring-, Directing- and
Control equipment

Corus Services IJmuiden

R1 42 01 07

Hydraulics-directive for suppliers, erection
companies, managers and users
Part 7: Selection Measuring-, Directing- and
Control equipment

7.3. **Sensors for various measurements**

R1 42 01 07

Hydraulics-directive for suppliers, erection companies, managers and users
Part 7: Selection Measuring-, Directing- and Control equipment

Hydraulics-directive for suppliers, erection
companies, managers and users
Part 7: Selection Measuring-, Directing- and
Control equipment

Corus Services IJmuiden

These sensors are to be used to measure: pressure, flow and temperature in an hydraulic
Hydraulics-directive for suppliers, erection
companies, managers and users
Part 7: Selection Measuring-, Directing- and
Control equipment

R1.42.01.07

Corus Services IJmuiden
system.

R1 42 01 07

Hydraulics-directive for suppliers, erection
companies, managers and users
Part 7: Selection Measuring-, Directing- and
Control equipment

Corus Services Umliden

These three quantities are united in one device and are read out by means of a portable Hydraulics-directive for suppliers, erection companies, managers and users

R1.42.01.07

Part 7: Selection Measuring-, Directing- and Control equipment

Corus Services IJmuiden
display.

R1 42 01 07

Hydraulics-directive for suppliers, erection
companies, managers and users
Part 7: Selection Measuring-, Directing- and
Control equipment

Corus Services Uniden

The device is also suitable for connection with a CM20 contamination monitor.

R1.42.01.07

Hydraulics-directive for suppliers, erection companies, managers and users

Part 7: Selection Measuring-, Directing- and Control equipment

Corus Services Uniden
Pressure drop: 1,4 bar at a full flow and 30 cSt.

R1 42 01 07

Hydraulics-directive for suppliers, erection
companies, managers and users
Part 7: Selection Measuring-, Directing- and
Control equipment

Corus Services: Uniden
The sensor is for inline mounting.

R1 42 01 07
Hydraulics-directive for suppliers, erection
companies, managers and users
Part 7: Selection Measuring-, Directing- and
Control equipment

Corus Services IJmuiden

R1 42 01 07

Hydraulics-directive for suppliers, erection
companies, managers and users
Part 7: Selection Measuring-, Directing- and
Control equipment

Corus Services Imiden
Manufacture: UCC

R1 42 01 07
Hydraulics-directive for suppliers, erection
companies, managers and users
Part 7: Selection Measuring-, Directing- and
Control equipment

Corus Services IJmuiden

R1 42 01 07

Hydraulics-directive for suppliers, erection
companies, managers and users
Part 7: Selection Measuring-, Directing- and
Control equipment

Corus Services Unvuiden
These industrial types are available:

R1 42 01 07
Hydraulics-directive for suppliers, erection
companies, managers and users
Part 7:Selection Measuring-, Directing- and
Control equipment

Corus Services II Imviten
Type 0 : 2 - 25 l/min

R1 42 01 07
Hydraulics-directive for suppliers, erection
companies, managers and users
Part 7: Selection Measuring-, Directing- and
Control equipment

Corus Services II Imiden
Type T : 20 - 100 l/min

R1 42 01 07
Hydraulics-directive for suppliers, erection
companies, managers and users
Part 7: Selection Measuring-, Directing- and
Control equipment

Corus Services Limited
Type 2 : 80 - 380 l/min

R1 42 01 07
Hydraulics-directive for suppliers, erection
companies, managers and users
Part 7: Selection Measuring-, Directing- and
Control equipment

Corus Services IJmuiden

R1 42 01 07

Hydraulics-directive for suppliers, erection
companies, managers and users
Part 7: Selection Measuring-, Directing- and
Control equipment

Corus Services IJmuiden
Note.

R1 42 01 07

Hydraulics-directive for suppliers, erection
companies, managers and users
Part 7: Selection Measuring-, Directing- and
Control equipment

Corus Services Limbiden
Flow measurements in one direction only.

R1 42 01 07
Return flow via built-in check valve.
Hydraulics-directive for suppliers, erection
companies, managers and users
Part 7: Selection Measuring-, Directing- and
Control equipment

Corus Services IJmuiden

R1 42 01 07

Hydraulics-directive for suppliers, erection
companies, managers and users
Part 7: Selection Measuring-, Directing- and
Control equipment

Corus Services IJmuiden
Pressure 0 - 420 bar

R1 42 01 07
Hydraulics-directive for suppliers, erection
companies, managers and users
Part 7: Selection Measuring-, Directing- and
Control equipment

Corus Services IJmuiden
Temperature: -10...+ 110 °C.

R1 42 01 07
Hydraulics-directive for suppliers, erection
companies, managers and users
Part 7: Selection Measuring-, Directing- and
Control equipment

Corus Services IJmuiden

R1 42 01 07

Hydraulics-directive for suppliers, erection
companies, managers and users
Part 7: Selection Measuring-, Directing- and
Control equipment

Corus Services IJmuiden
Accuracy.

R1 42 01 07

Hydraulics-directive for suppliers, erection
companies, managers and users
Part 7: Selection Measuring-, Directing- and
Control equipment

Corus Services, IJmuiden
In combination with dedicated display.

R1 42 01 07
Hydraulics-directive for suppliers, erection
companies, managers and users
Part 7: Selection Measuring-, Directing- and
Control equipment

Corus Services IJmuiden

R1 42 01 07

Hydraulics-directive for suppliers, erection
companies, managers and users
Part 7: Selection Measuring-, Directing- and
Control equipment

Corus Services II Incident
Pressure $\pm 1\%$ Full scale

R1 42 01 07
Hydraulics-directive for suppliers, erection
companies, managers and users
Part 7: Selection Measuring-, Directing- and
Control equipment

Corus Services Ltd
Flow : $\pm 5\%$ Full scale

R1 42 01 07
Hydraulics-directive for suppliers, erection
companies, managers and users
Part 7: Selection Measuring-, Directing- and
Control equipment

Corus Services Umliden
7.3.2. **Ordering specification**

R1 42 01 07
Hydraulics-directive for suppliers, erection
companies, managers and users
Part 7: Selection Measuring-, Directing- and
Control equipment

Corus Services Unmuiden
Type 0: UC.SFI.0144.100

R1 42 01 07
Hydraulics-directive for suppliers, erection
companies, managers and users
Part 7: Selection Measuring-, Directing- and
Control equipment

Corus Services Uniden
Type T: UC-ST-114.100

R1 42 01 07
Hydraulics-directive for suppliers, erection
companies, managers and users
Part 7: Selection Measuring-, Directing- and
Control equipment

Corus Services Unmiden
Type 2: UC.SFI.2144.100

R1 42 01 07
Hydraulics-directive for suppliers, erection
companies, managers and users
Part 7:Selection Measuring-, Directing- and
Control equipment

Corus Services IJmuiden

R1 42 01 07

Hydraulics-directive for suppliers, erection
companies, managers and users
Part 7: Selection Measuring-, Directing- and
Control equipment

Corus Services IJmuiden
Display unit: UC-EM20.9000.

R1 42 01 07
Hydraulics-directive for suppliers, erection
companies, managers and users
Part 7: Selection Measuring-, Directing- and
Control equipment

Corus Services IJmuiden

R1 42 01 07

Hydraulics-directive for suppliers, erection
companies, managers and users
Part 7: Selection Measuring-, Directing- and
Control equipment

Corus Services Unmuiden:
The device is for use in mineral oil only.

R1 42 01 07
Hydraulics-directive for suppliers, erection
companies, managers and users
Part 7: Selection Measuring-, Directing- and
Control equipment

Corus Services Uuiden
Adaption for use in water or HWBF is possible.

R1 42 01 07

Hydraulics-directive for suppliers, erection
companies, managers and users
Part 7: Selection Measuring-, Directing- and
Control equipment

Corus Services IJmuiden

R1 42 01 07

Hydraulics-directive for suppliers, erection
companies, managers and users
Part 7: Selection Measuring-, Directing- and
Control equipment

7.4. **Pressure gauges and accessories**

R1 42 01 07

Hydraulics-directive for suppliers, erection
companies, managers and users
Part 7: Selection Measuring-, Directing- and
Control equipment

<p>7.4.1. Bourdon pressure gauge for panel mounting</p>	<p><i>- diameter of casing 100 mm</i></p> <p>Hydraulics-directive for suppliers, erection companies, managers and users</p> <p>Part 7:Selection Measuring-, Directing- and Control equipment</p>
---	--

Corus Services Limuiden
Dimensions in mm

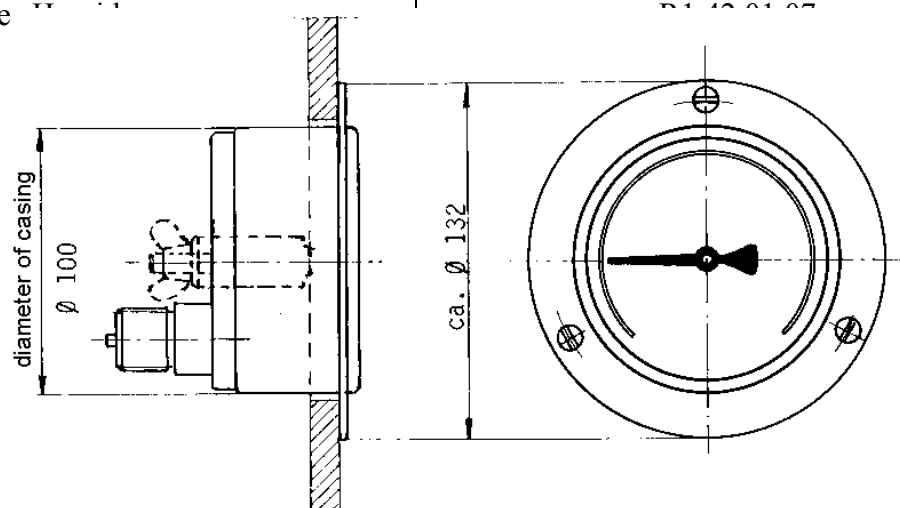
R1 42 01 07
Hydraulics-directive for suppliers, erection
companies, managers and users
Part 7:Selection Measuring-, Directing- and
Control equipment

Corus Services IJmuiden

Figure 7.6

R1 42 01 07

Hydraulics-directive for suppliers, erection
companies, managers and users
Part 7: Selection Measuring-, Directing- and
Control equipment



erection
rs
ing- and

Corus Services IJmuiden

R1 42 01 07

Hydraulics-directive for suppliers, erection
companies, managers and users
Part 7: Selection Measuring-, Directing- and
Control equipment

Corus Services Uvuiden
Filled with glycerine

R1 42 01 07
Hydraulics-directive for suppliers, erection
companies, managers and users
Part 7:Selection Measuring-, Directing- and
Control equipment

Corus Services IJmuiden

Series measuring capacity: 16-60-100-160-250 and 400 bar

R1 42 01 07

Hydraulics-directive for suppliers, erection
companies, managers and users

Part 7: Selection Measuring-, Directing- and
Control equipment

Corus Services Uv

Measuring capacity: 1,3 x max. operational pressure + bar.

R1 42 01 07

Hydraulics-directive for suppliers, erection companies, managers and users

Part 7: Selection Measuring-, Directing- and Control equipment

Corus Services IJmuiden
Front flange material: chrome-plated steel

R1 42 01 07

Hydraulics-directive for suppliers, erection
companies, managers and users
Part 7: Selection Measuring-, Directing- and
Control equipment

Corus Services IJmuiden

R1 42 01 07

Hydraulics-directive for suppliers, erection
companies, managers and users
Part 7: Selection Measuring-, Directing- and
Control equipment

Corus Services IJmuiden
Medium

R1 42 01 07

Hydraulics-directive for suppliers, erection
companies, managers and users
Part 7: Selection Measuring-, Directing- and
Control equipment

Corus Services IJmuiden
Mineral oil.

R1 42 01 07

Hydraulics-directive for suppliers, erection
companies, managers and users
Part 7: Selection Measuring-, Directing- and
Control equipment

Corus Services IJmuiden

R1 42 01 07

Hydraulics-directive for suppliers, erection
companies, managers and users
Part 7: Selection Measuring-, Directing- and
Control equipment

Corus Services IJmuiden

R1 42 01 07

Hydraulics-directive for suppliers, erection
companies, managers and users
Part 7: Selection Measuring-, Directing- and
Control equipment

Temperature measurement (Temperate switches)

R1 42 01 07

Hydraulics-directive for suppliers, erection companies, managers and users
Part 7: Selection Measuring-, Directing- and Control equipment

Hydraulics-directive for suppliers, erection
companies, managers and users
Part 7: Selection Measuring-, Directing- and
Control equipment

Corus Services Umuide
temperature and as a multiple switch.

R1 42 01 07

Hydraulics-directive for suppliers, erection
companies, managers and users
Part 7:Selection Measuring-, Directing- and
Control equipment

7.5.2. *Electronic temperature switches*

R1 42 01 07

Hydraulics-directive for suppliers, erection
companies, managers and users
Part 7: Selection Measuring-, Directing- and
Control equipment

Corus Services Unuiden
Type ETS 1600, manufacture Hydac will be used

R1 42 01 07

Hydraulics-directive for suppliers, erection
companies, managers and users
Part 7: Selection Measuring-, Directing- and
Control equipment

Corus Services IJmuiden

R1 42 01 07

Hydraulics-directive for suppliers, erection
companies, managers and users
Part 7: Selection Measuring-, Directing- and
Control equipment

Corus Services Humiden
Range: 0 - 100 °C.

R1 42 01 07
Hydraulics-directive for suppliers, erection
companies, managers and users
Part 7: Selection Measuring-, Directing- and
Control equipment

Corus Services IJmuiden

R1 42 01 07

Hydraulics-directive for suppliers, erection
companies, managers and users
Part 7: Selection Measuring-, Directing- and
Control equipment

Corus Services Umuiden
For accuracy: see electrical data.

R1 42 01 07
Hydraulics-directive for suppliers, erection
companies, managers and users
Part 7: Selection Measuring-, Directing- and
Control equipment

Corus Services IJmuiden

R1 42 01 07

Hydraulics-directive for suppliers, erection
companies, managers and users
Part 7: Selection Measuring-, Directing- and
Control equipment

Corus Services IJmuiden

General data

R1 42 01 07

Hydraulics-directive for suppliers, erection
companies, managers and users
Part 7: Selection Measuring-, Directing- and
Control equipment

Corus Services IJmuiden

R1 42 01 07

Hydraulics-directive for suppliers, erection
companies, managers and users
Part 7: Selection Measuring-, Directing- and
Control equipment

Corus Services Unmiden

The device is based upon a PT100 element, with electronics and relays. A 3 number
R14201.07
Hydraulics-directive for suppliers, erection
companies, managers and users
Part 7: Selection Measuring-, Directing- and
Control equipment

Corus Services IJmuiden

display shows the temperature or the adjusted switch points.

R1 42 01 07

Hydraulics-directive for suppliers, erection companies, managers and users

Part 7: Selection Measuring-, Directing- and Control equipment

Corus Services IJmuiden

R1 42 01 07

Hydraulics-directive for suppliers, erection
companies, managers and users
Part 7: Selection Measuring-, Directing- and
Control equipment

Corus Services II
Hysteresis: adjustable

(one valve for all relays contacts).

R1 42 01 07

Hydraulics-directive for suppliers, erection
companies, managers and users

Part 7: Selection Measuring-, Directing- and
Control equipment

Corus Services IJmuiden

R1 42 01 07

Hydraulics-directive for suppliers, erection
companies, managers and users
Part 7: Selection Measuring-, Directing- and
Control equipment

Corus Services, IJmuiden
Electrical data

R1 42 01 07

Hydraulics-directive for suppliers, erection
companies, managers and users
Part 7: Selection Measuring-, Directing- and
Control equipment

Corus Services IJmuiden

R1 42 01 07

Hydraulics-directive for suppliers, erection
companies, managers and users
Part 7: Selection Measuring-, Directing- and
Control equipment

Corus Services IJmuiden
Supply

: 20-32 VDC R1 42 01 07
Hydraulics-directive for suppliers, erection
companies, managers and users
Part 7: Selection Measuring-, Directing- and
Control equipment

Corus Services IJmuiden
Current

: ca. 200 mA R1 42 01 07
Hydraulics-directive for suppliers, erection
companies, managers and users
Part 7: Selection Measuring-, Directing- and
Control equipment

Corus Services IJmuiden
Accuracy

: 1.0 ° R1 42 01 07
Hydraulics-directive for suppliers, erection
companies, managers and users
Part 7: Selection Measuring-, Directing- and
Control equipment

Corus Services IJmuiden
Display

: 0-100 °C R1 42 01 07
Hydraulics-directive for suppliers, erection
companies, managers and users
Part 7: Selection Measuring-, Directing- and
Control equipment

Corus Services Ummuiden
Relays set points

: 0-100 °C R1 42 01 07
Hydraulics-directive for suppliers, erection
companies, managers and users
Part 7: Selection Measuring-, Directing- and
Control equipment

Corus Services IJmuiden
Ambient temperature

: -25...+60 °C R1 42 01 07
Hydraulics-directive for suppliers, erection
companies, managers and users
Part 7: Selection Measuring-, Directing- and
Control equipment

Corus Services IJmuiden
Hysteresis

: 0.5...20 °C R1 42 01 07
Hydraulics-directive for suppliers, erection
companies, managers and users
Part 7: Selection Measuring-, Directing- and
Control equipment

Corus Services Uvueden
Analogue output

: 4-20 mA R1 42 01 07
Hydraulics-directive for suppliers, erection
companies, managers and users
Part 7: Selection Measuring-, Directing- and
Control equipment

Corus Services IJmuiden
Electrical connection

R1 42 01 07
: 14 pole plugs
Hydraulics-directive for suppliers, erection
companies, managers and users
Part 7: Selection Measuring-, Directing- and
Control equipment

Corus Services Uv
Conductors

: 1.5 mm² R1 42 01 07
Hydraulics-directive for suppliers, erection
companies, managers and users
Part 7: Selection Measuring-, Directing- and
Control equipment

Corus Services Unmuiden
Protection class

: IP 65 R1 42 01 07
Hydraulics-directive for suppliers, erection
companies, managers and users
Part 7: Selection Measuring-, Directing- and
Control equipment

Corus Services IJmuiden

R1 42 01 07

Hydraulics-directive for suppliers, erection
companies, managers and users
Part 7: Selection Measuring-, Directing- and
Control equipment

Corus Services IJmuiden

R1 42 01 07

Hydraulics-directive for suppliers, erection
companies, managers and users
Part 7: Selection Measuring-, Directing- and
Control equipment

Corus Services IJmuiden
Relays data

R1 42 01 07
Hydraulics-directive for suppliers, erection
companies, managers and users
Part 7:Selection Measuring-, Directing- and
Control equipment

Corus Services IJmuiden

R1 42 01 07

Hydraulics-directive for suppliers, erection
companies, managers and users
Part 7: Selection Measuring-, Directing- and
Control equipment

Corus Services IJmuiden
Number

: 4. R1 42 01 07
Hydraulics-directive for suppliers, erection
companies, managers and users
Part 7: Selection Measuring-, Directing- and
Control equipment

Corus Services IJmuiden

R1.42.01.07
relay 1+2 and 3+4 with a common middle
Hydraulics-directive for suppliers, erection
companies, managers and users
Part 7: Selection Measuring-, Directing- and
Control equipment

Corus Services IJmuiden

terminal R1 42 01 07
Hydraulics-directive for suppliers, erection
companies, managers and users
Part 7: Selection Measuring-, Directing- and
Control equipment

Corus Services IJmuiden
Contacts

R1.42.01.07
: make and break contacts
Hydraulics-directive for suppliers, erection
companies, managers and users
Part 7: Selection Measuring-, Directing- and
Control equipment

Corus Services Umuiden
Switch capacity

: 0.1...250 VAC
R1 42 01 07
Hydraulics-directive for suppliers, erection
companies, managers and users
Part 7:Selection Measuring-, Directing- and
Control equipment

Corus Services IJmuiden

0.025...2A R1 42 01 07
Hydraulics-directive for suppliers, erection
companies, managers and users
Part 7:Selection Measuring-, Directing- and
Control equipment

Corus Services IJmuiden

400 VA, 50 W R1 42 01 07
Hydraulics-directive for suppliers, erection
companies, managers and users
Part 7: Selection Measuring-, Directing- and
Control equipment

Corus Services IJmuiden
Delay

: 25 ms R1 42 01 07
Hydraulics-directive for suppliers, erection
companies, managers and users
Part 7: Selection Measuring-, Directing- and
Control equipment

Corus Services Umliden
Life time expectation

R1.42.01 07
: min. 1 million shifts
Hydraulics-directive for suppliers, erection
companies, managers and users
Part 7: Selection Measuring-, Directing- and
Control equipment

Corus Services IJmuiden

R1 42 01 07

Hydraulics-directive for suppliers, erection
companies, managers and users
Part 7: Selection Measuring-, Directing- and
Control equipment

Corus Services Umeiden
Ordering specifications

R1 42 01 07
Hydraulics-directive for suppliers, erection
companies, managers and users
Part 7:Selection Measuring-, Directing- and
Control equipment

Corus Services IJmuiden

R1 42 01 07

Hydraulics-directive for suppliers, erection
companies, managers and users
Part 7: Selection Measuring-, Directing- and
Control equipment

Corus Services Hmuiden
E1S1601-C-100-000

R1 42 01 07
Hydraulics-directive for suppliers, erection
companies, managers and users
Part 7:Selection Measuring-, Directing- and
Control equipment

Corus Services IJmuiden

R1 42 01 07

Hydraulics-directive for suppliers, erection
companies, managers and users
Part 7: Selection Measuring-, Directing- and
Control equipment

Corus Services, IJmuiden
Sensor + submerged tube: TFP100.

R1 42 01 07
Hydraulics-directive for suppliers, erection
companies, managers and users
Part 7: Selection Measuring-, Directing- and
Control equipment

Corus Services Umuiden
Electrical scheme

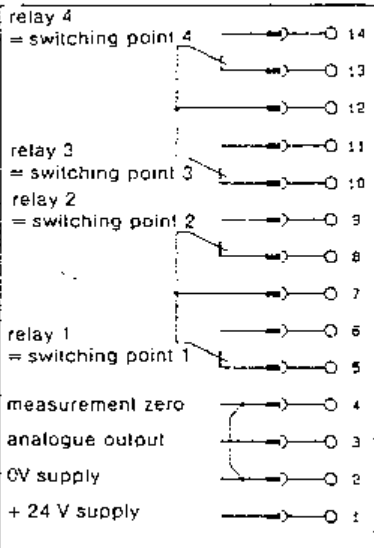
R1 42 01 07

Hydraulics-directive for suppliers, erection
companies, managers and users
Part 7: Selection Measuring-, Directing- and
Control equipment

Corus Services IJmuiden
Figure 7.7

R1 42 01 07
Hydraulics-directive for suppliers, erection
companies, managers and users
Part 7: Selection Measuring-, Directing- and
Control equipment

Terminal strip



42 01 07

ve for suppliers, erection
nanagers and users
easuring-, Directing- and
ol equipment

Corus Services IJmuiden

R1 42 01 07

Hydraulics-directive for suppliers, erection
companies, managers and users
Part 7: Selection Measuring-, Directing- and
Control equipment

Corus Services IJmuiden

R1 42 01 07

Hydraulics-directive for suppliers, erection
companies, managers and users
Part 7: Selection Measuring-, Directing- and
Control equipment

Corus Services IJmuiden
Dimensions

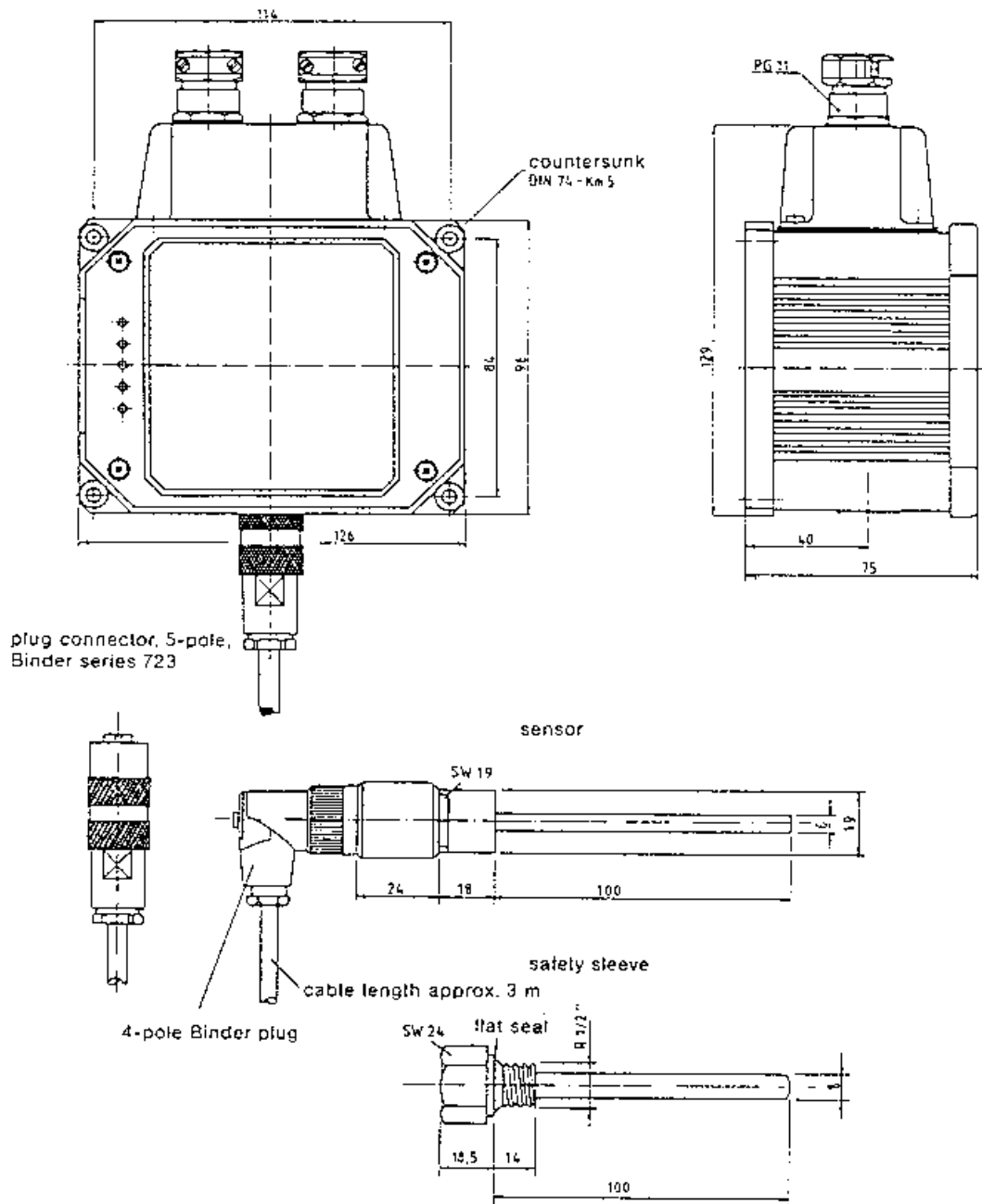
R1 42 01 07
Hydraulics-directive for suppliers, erection
companies, managers and users
Part 7: Selection Measuring-, Directing- and
Control equipment

Corus Services IJmuiden

Figure 7.8

R1 42 01 07

Hydraulics-directive for suppliers, erection
companies, managers and users
Part 7: Selection Measuring-, Directing- and
Control equipment



Corus Services IJmuiden

R1 42 01 07

Hydraulics-directive for suppliers, erection
companies, managers and users
Part 7: Selection Measuring-, Directing- and
Control equipment

Corus Services IJmuiden

R1 42 01 07

Hydraulics-directive for suppliers, erection
companies, managers and users
Part 7: Selection Measuring-, Directing- and
Control equipment

7.6. **Temperature measurement (Dial thermometers)**

R1 42 01 07

Hydraulics-directive for suppliers, erection companies, managers and users
Part 7: Selection Measuring-, Directing- and Control equipment

Corus Services Uv

Round dial thermometers with a fixed insert or a telemetry connection, containing liquid.

R1 42:01 07
Hydraulics-directive for suppliers, erection
companies, managers and users
Part 7: Selection Measuring-, Directing- and
Control equipment

Corus Services IJmuiden

R1 42 01 07

Hydraulics-directive for suppliers, erection
companies, managers and users
Part 7: Selection Measuring-, Directing- and
Control equipment

Corus Services IJmuiden : from 0 - 120 °C
Range

R1 42 01 07
Hydraulics-directive for suppliers, erection
companies, managers and users
Part 7: Selection Measuring-, Directing- and
Control equipment

Corus Services IJmuiden

R1 42 01 07

Hydraulics-directive for suppliers, erection
companies, managers and users
Part 7: Selection Measuring-, Directing- and
Control equipment

Corus Services IJmuiden
Graduation

: over 270 ° of the circumference

R1 42 01 07

Hydraulics-directive for suppliers, erection
companies, managers and users

Part 7: Selection Measuring-, Directing- and
Control equipment

Corus Services IJmuiden

R1 42 01 07

Hydraulics-directive for suppliers, erection
companies, managers and users
Part 7: Selection Measuring-, Directing- and
Control equipment

Corus Services IJmuiden : 1,5% of the maximum reading
Accuracy

R1 42 01 07

Hydraulics-directive for suppliers, erection
companies, managers and users
Part 7: Selection Measuring-, Directing- and
Control equipment

Corus Services IJmuiden

R1 42 01 07

Hydraulics-directive for suppliers, erection
companies, managers and users
Part 7: Selection Measuring-, Directing- and
Control equipment

Corus Services IJmuiden : at 20 °C
Calibration

R1 42 01 07
Hydraulics-directive for suppliers, erection
companies, managers and users
Part 7: Selection Measuring-, Directing- and
Control equipment

Corus Services IJmuiden

R1 42 01 07

Hydraulics-directive for suppliers, erection
companies, managers and users
Part 7: Selection Measuring-, Directing- and
Control equipment

Corus Services IJmuiden
Casing compensation

: correction for ambient temperature

R1 42 01 07

Hydraulics-directive for suppliers, erection
companies, managers and users

Part 7: Selection Measuring-, Directing- and
Control equipment

Corus Services IJmuiden

R1 42 01 07

Hydraulics-directive for suppliers, erection
companies, managers and users
Part 7: Selection Measuring-, Directing- and
Control equipment

Corus Services IJmuiden
Input

: Material: steel or messing; ø 12; L=200mm

R1.42.01 07

Hydraulics-directive for suppliers, erection
companies, managers and users
Part 7: Selection Measuring-, Directing- and
Control equipment

Corus Services IJmuiden

Attachment in submerging tube with flat flange and bolt

R1.42.01.07
Hydraulics-directive for suppliers, erection
companies, managers and users
Part 7: Selection Measuring-, Directing- and
Control equipment

Corus Services IJmuiden

with G.1/2" internal (see figure 7.11)

R1 42 01 07

Hydraulics-directive for suppliers, erection
companies, managers and users

Part 7: Selection Measuring-, Directing- and
Control equipment

Corus Services IJmuiden

R1 42 01 07

Hydraulics-directive for suppliers, erection
companies, managers and users
Part 7: Selection Measuring-, Directing- and
Control equipment

Corus Services II Imuiden

Submerging casing (protected): Material: messing; ø 12,5 internal, suitable for nominal
R1 42 01 07
Hydraulics-directive for suppliers, erection
companies, managers and users
Part 7: Selection Measuring-, Directing- and
Control equipment

Corus Services IJmuiden

pressure PN 16

R1 42 01 07

Hydraulics-directive for suppliers, erection
companies, managers and users
Part 7: Selection Measuring-, Directing- and
Control equipment

Corus Services IJmuiden

Attachment with 2 x G.1/2" internal (see Figure 7.11.)

R1.42.01.07

Hydraulics-directive for suppliers, erection
companies, managers and users
Part 7: Selection Measuring-, Directing- and
Control equipment

Corus Services IJmuiden

R1 42 01 07

Hydraulics-directive for suppliers, erection
companies, managers and users
Part 7: Selection Measuring-, Directing- and
Control equipment

Corus Services IJmuiden

R1 42 01 07

Hydraulics-directive for suppliers, erection
companies, managers and users
Part 7: Selection Measuring-, Directing- and
Control equipment

Corus Services Uuiden
7.6.2. *For tanks up to 1000 dm³*

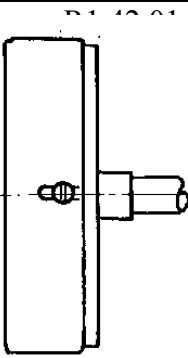
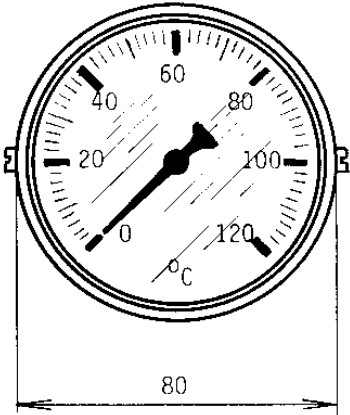
R1 42 01 07
Hydraulics-directive for suppliers, erection
companies, managers and users
Part 7: Selection Measuring-, Directing- and
Control equipment

Corus Services IJmuiden
Thermometers with fixed insert

R1 42 01 07
Hydraulics-directive for suppliers, erection
companies, managers and users
Part 7: Selection Measuring-, Directing- and
Control equipment

Corus Services IJmuiden
Figure 7.9

R1 42 01 07
Hydraulics-directive for suppliers, erection
companies, managers and users
Part 7: Selection Measuring-, Directing- and
Control equipment



07
suppliers, erection
rs and users
ig-, Directing- and
oment

Corus Services IJmuiden

R1 42 01 07

Hydraulics-directive for suppliers, erection
companies, managers and users
Part 7: Selection Measuring-, Directing- and
Control equipment

Corus Services Jmuiden
Casing: 080

R1 42 01 07
Hydraulics-directive for suppliers, erection
companies, managers and users
Part 7: Selection Measuring-, Directing- and
Control equipment

Corus Services Umliden
Submerging tube: according to Figure 7.8

R1 42 01 07
Hydraulics-directive for suppliers, erection
companies, managers and users
Part 7: Selection Measuring-, Directing- and
Control equipment

Corus Services, IJmuiden
Protection against mechanical damage.

R1 42 01 07
Hydraulics-directive for suppliers, erection
companies, managers and users
Part 7: Selection Measuring-, Directing- and
Control equipment

Corus Services Ilmuiden

Protection is to be mounted direct above the thermometer.

R1 42 01 07

Hydraulics-directive for suppliers, erection
companies, managers and users

Part 7: Selection Measuring-, Directing- and
Control equipment

Corus Services IJmuiden
Manufacture:

R1 42 01 07

Hydraulics-directive for suppliers, erection
companies, managers and users
Part 7: Selection Measuring-, Directing- and
Control equipment

Corus Services Unmuiden
Ubel fig.1076 spec (excl. submerging tube) or

R1 42 01 07
Hydraulics-directive for suppliers, erection
companies, managers and users
Part 7:Selection Measuring-, Directing- and
Control equipment

Corus Services IJmuiden
Fischer type 5T125.7 E80 E2/4x200x12

R1 42 01 07
S06 (incl. submerging tube) or equal.
Hydraulics-directive for suppliers, erection
companies, managers and users
Part 7: Selection Measuring-, Directing- and
Control equipment

Corus Services IJmuiden

R1 42 01 07

Hydraulics-directive for suppliers, erection
companies, managers and users
Part 7: Selection Measuring-, Directing- and
Control equipment

Corus Services IJmuiden

R1 42 01 07

Hydraulics-directive for suppliers, erection
companies, managers and users
Part 7: Selection Measuring-, Directing- and
Control equipment

Corus Services Uniden
7.6.3. *For tanks of 250 dm³ and up*

R1 42 01 07
Hydraulics-directive for suppliers, erection
companies, managers and users
Part 7: Selection Measuring-, Directing- and
Control equipment

Corus Services II

Thermometer with fixed telemetry connection (capillary tube) provided with a rear flange

R1.42.01.07

Hydraulics-directive for suppliers, erection companies, managers and users

Part 7: Selection Measuring-, Directing- and Control equipment

Corus Services IJmuiden

for assembly on a panel plus a telemetry connection fixed to the bottom of the housing.

R142.01.07

Hydraulics-directive for suppliers, erection companies, managers and users
Part 7: Selection Measuring-, Directing- and Control equipment

Corus Services IJmuiden

R1 42 01 07

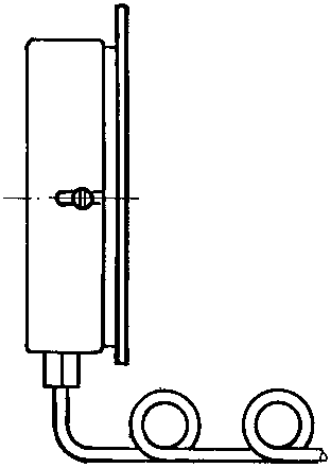
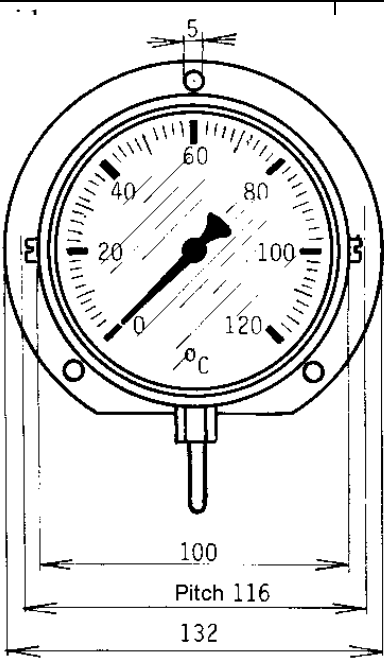
Hydraulics-directive for suppliers, erection
companies, managers and users
Part 7: Selection Measuring-, Directing- and
Control equipment

Corus Services IJmuiden

Figure 7.10

R1 42 01 07

Hydraulics-directive for suppliers, erection
companies, managers and users
Part 7: Selection Measuring-, Directing- and
Control equipment



iers, erection
d users
Directing- and
t

Corus Services IJmuiden

R1 42 01 07

Hydraulics-directive for suppliers, erection
companies, managers and users
Part 7: Selection Measuring-, Directing- and
Control equipment

Corus Services Jmuiden
Casing: 0100

R1 42 01 07
Hydraulics-directive for suppliers, erection
companies, managers and users
Part 7: Selection Measuring-, Directing- and
Control equipment

Corus Services Uluideu

Capillary: Steel with copper protection; length 2 meter. To be mounted protected in U-Hydraulics-directive for suppliers, erection companies, managers and users
Part 7: Selection Measuring-, Directing- and Control equipment

Corus Services, IJmuiden
profile and the minimum bend radius held.

R1 42 01 07
Hydraulics-directive for suppliers, erection
companies, managers and users
Part 7: Selection Measuring-, Directing- and
Control equipment

Corus Services Ilmuiden
Submerging casing according to Figure 7.11.

R1 42 01 07
Hydraulics-directive for suppliers, erection
companies, managers and users
Part 7: Selection Measuring-, Directing- and
Control equipment

Corus Services IJmuiden
Manufacture:

R1 42 01 07

Hydraulics-directive for suppliers, erection
companies, managers and users
Part 7: Selection Measuring-, Directing- and
Control equipment

Corus Services Hydraulics
- Ubel fig. 1079 spec. (excl. submerging tube) or

R1 42 01 07
Hydraulics-directive for suppliers, erection
companies, managers and users
Part 7: Selection Measuring-, Directing- and
Control equipment

Corus Services, Inwiden

- Fischer type 61125.7 B 100 SC 2 E2/4x200x12S-S06 (incl. submerging tube) or equal.

R1.42.01.07
Hydraulics-directive for suppliers, erection
companies, managers and users
Part 7: Selection Measuring-, Directing- and
Control equipment

Corus Services IJmuiden

R1 42 01 07

Hydraulics-directive for suppliers, erection
companies, managers and users
Part 7: Selection Measuring-, Directing- and
Control equipment

Corus Services IJmuiden

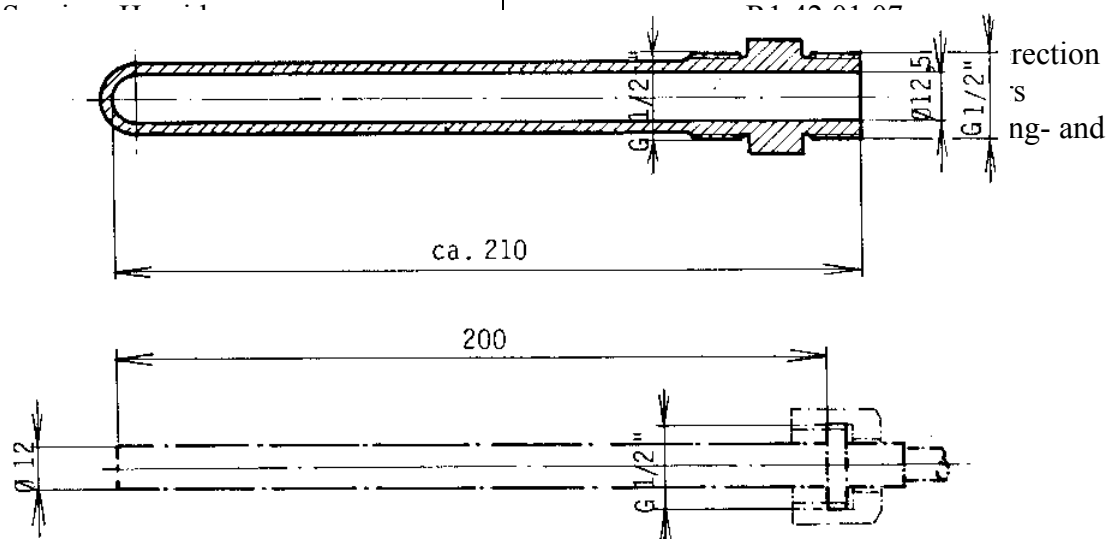
R1 42 01 07

Hydraulics-directive for suppliers, erection
companies, managers and users
Part 7: Selection Measuring-, Directing- and
Control equipment

Corus Services Uvueden
7.6.4. *Insert and submerging tube*

R1 42 01 07
Hydraulics-directive for suppliers, erection
companies, managers and users
Part 7: Selection Measuring-, Directing- and
Control equipment

Cor



Corus Services IJmuiden

R1 42 01 07

Hydraulics-directive for suppliers, erection
companies, managers and users
Part 7: Selection Measuring-, Directing- and
Control equipment

Corus Services IJmuiden
Material: messing of steel

R1 42 01 07
Hydraulics-directive for suppliers, erection
companies, managers and users
Part 7: Selection Measuring-, Directing- and
Control equipment

Corus Services Unvuiden
Design: suitable for minimal pressure PN 16

R1 42 01 07
Hydraulics-directive for suppliers, erection
companies, managers and users
Part 7: Selection Measuring-, Directing- and
Control equipment

Corus Services, Umuïden

Mounting: horizontal, at least 100 mm underneath the “too low” level.

R1-42 01 07

Hydraulics-directive for suppliers, erection companies, managers and users

Part 7: Selection Measuring-, Directing- and Control equipment

Corus Services IJmuiden

R1 42 01 07

Hydraulics-directive for suppliers, erection
companies, managers and users
Part 7: Selection Measuring-, Directing- and
Control equipment

Corus Services IJmuiden

R1 42 01 07

Hydraulics-directive for suppliers, erection
companies, managers and users
Part 7: Selection Measuring-, Directing- and
Control equipment

7.7. Corus Services Umuiden
Level measurement

R1 42 01 07

Hydraulics-directive for suppliers, erection
companies, managers and users
Part 7: Selection Measuring-, Directing- and
Control equipment

Corus Services Unmuiden
7.7.1. *Level glasses for tanks up to 100 dm³*

R1 42 01 07

Hydraulics-directive for suppliers, erection
companies, managers and users
Part 7: Selection Measuring-, Directing- and
Control equipment

Corus Services IJmuiden
Material

: Brass or aluminium, looking glass, or plexiglass
R1 42 01 07
Hydraulics-directive for suppliers, erection
companies, managers and users
Part 7: Selection Measuring-, Directing- and
Control equipment

Corus Services IJmuiden
Mountings

: With nut BSP 1/2", BSP 1" or BSP 1-1/2"

R142.01.07

Hydraulics-directive for suppliers, erection
companies, managers and users
Part 7: Selection Measuring-, Directing- and
Control equipment

Corus Services IJmuiden : NBR

R1 42 01 07
Hydraulics-directive for suppliers, erection
companies, managers and users
Part 7: Selection Measuring-, Directing- and
Control equipment

Corus Services II Imuiden
Maximum temperature : 80 °C

R1 42 01 07
Hydraulics-directive for suppliers, erection
companies, managers and users
Part 7: Selection Measuring-, Directing- and
Control equipment

Corus Services IJmuiden
Medium

: Mineral oil

R1 42 01 07

Hydraulics-directive for suppliers, erection
companies, managers and users
Part 7: Selection Measuring-, Directing- and
Control equipment

Hydraulics-directive for suppliers, erection companies, managers and users
Part 7: Selection Measuring-, Directing- and Control equipment

Corus Services Unmuiden

If a hydraulic supplier's standardised reservoir will be used, a level glass in the inspection
Hydraulics-directive for suppliers, erection
companies, managers and users
Part 7: Selection Measuring-, Directing- and
Control equipment

Corus Services Uniden

cover is allowed. Otherwise level glasses must meet the following specifications.

R1.42.01.07

Hydraulics-directive for suppliers, erection companies, managers and users

Part 7: Selection Measuring-, Directing- and Control equipment

Corus Services IJmuiden

R1 42 01 07

Hydraulics-directive for suppliers, erection
companies, managers and users
Part 7: Selection Measuring-, Directing- and
Control equipment

Corus Services IJmuiden
Material

: Steel chrome-plated, brass or aluminum, looking glass
R1.42.01.07
Hydraulics-directive for suppliers, erection
companies, managers and users
Part 7: Selection Measuring-, Directing- and
Control equipment

Corus Services IJmuiden

of plexiglass

R1 42 01 07

Hydraulics-directive for suppliers, erection
companies, managers and users
Part 7: Selection Measuring-, Directing- and
Control equipment

Corus Services IJmuiden
Mounting

: With nut M12

R1 42 01 07

Hydraulics-directive for suppliers, erection
companies, managers and users
Part 7: Selection Measuring-, Directing- and
Control equipment

Corus Services IJmuiden
Seal

: Perbunan

R1 42 01 07

Hydraulics-directive for suppliers, erection
companies, managers and users
Part 7: Selection Measuring-, Directing- and
Control equipment

Corus Services II Imuiden
Maximum temperature : 80 °C

R1 42 01 07
Hydraulics-directive for suppliers, erection
companies, managers and users
Part 7: Selection Measuring-, Directing- and
Control equipment

Corus Services IJmuiden
Medium

: Mineral oil

R1 42 01 07

Hydraulics-directive for suppliers, erection
companies, managers and users
Part 7: Selection Measuring-, Directing- and
Control equipment

Corus Services IJmuiden

Marks

: Next marks to be present at level glass.

R1.42.01 07

Hydraulics-directive for suppliers, erection
companies, managers and users
Part 7: Selection Measuring-, Directing- and
Control equipment

Corus Services IJmuiden

– Too high

R1 42 01 07

Hydraulics-directive for suppliers, erection
companies, managers and users
Part 7: Selection Measuring-, Directing- and
Control equipment

Corus Services IJmuiden

– Maximum fill

R1 42 01 07

Hydraulics-directive for suppliers, erection
companies, managers and users
Part 7: Selection Measuring-, Directing- and
Control equipment

Corus Services IJmuiden

– Low

R1 42 01 07

Hydraulics-directive for suppliers, erection
companies, managers and users
Part 7: Selection Measuring-, Directing- and
Control equipment

Corus Services IJmuiden

– Too low

R1 42 01 07

Hydraulics-directive for suppliers, erection
companies, managers and users

Part 7: Selection Measuring-, Directing- and
Control equipment

Corus Services IJmuiden

R1 42 01 07

Hydraulics-directive for suppliers, erection
companies, managers and users
Part 7: Selection Measuring-, Directing- and
Control equipment

Corus Services, IJmuiden
All these levels must be in sight at level glass.

R1 42 01 07

Hydraulics-directive for suppliers, erection
companies, managers and users
Part 7: Selection Measuring-, Directing- and
Control equipment

Corus Services IJmuiden

R1 42 01 07

Hydraulics-directive for suppliers, erection
companies, managers and users
Part 7: Selection Measuring-, Directing- and
Control equipment

Corus Services IJmuiden
Manufacture:

R1 42 01 07

Hydraulics-directive for suppliers, erection
companies, managers and users

Part 7: Selection Measuring-, Directing- and
Control equipment

Corus Services IJmuiden
BCC

R1 42 01 07
Hydraulics-directive for suppliers, erection
companies, managers and users
Part 7: Selection Measuring-, Directing- and
Control equipment

Corus Services IJmuiden
Single level glass: FL 213 (127 mm)

R1 42 01 07
Hydraulics-directive for suppliers, erection
companies, managers and users
Part 7: Selection Measuring-, Directing- and
Control equipment

Corus Services Uvendien
Double level glass: FL 313 (254 mm)

R1 42 01 07
Hydraulics-directive for suppliers, erection
companies, managers and users
Part 7: Selection Measuring-, Directing- and
Control equipment

Corus Services IJmuiden

R1 42 01 07

Hydraulics-directive for suppliers, erection
companies, managers and users
Part 7: Selection Measuring-, Directing- and
Control equipment

Corus Services IJmuiden
Hydac

R1 42 01 07
Hydraulics-directive for suppliers, erection
companies, managers and users
Part 7: Selection Measuring-, Directing- and
Control equipment

Corus Services IJmuiden
Single level glass: FSA 127.1.1/T 12

R1 42 01 07
Hydraulics-directive for suppliers, erection
companies, managers and users
Part 7: Selection Measuring-, Directing- and
Control equipment

Corus Services Uvendien
Double level glass: FSA 254.1.1/T 12

R1 42 01 07
Hydraulics-directive for suppliers, erection
companies, managers and users
Part 7: Selection Measuring-, Directing- and
Control equipment

Corus Services IJmuiden

R1 42 01 07

Hydraulics-directive for suppliers, erection
companies, managers and users
Part 7: Selection Measuring-, Directing- and
Control equipment

Corus Services IJmuiden
or equal.

R1 42 01 07

Hydraulics-directive for suppliers, erection
companies, managers and users
Part 7: Selection Measuring-, Directing- and
Control equipment

Corus Services IJmuiden

R1 42 01 07

Hydraulics-directive for suppliers, erection
companies, managers and users
Part 7: Selection Measuring-, Directing- and
Control equipment

Corus Services IJmuiden

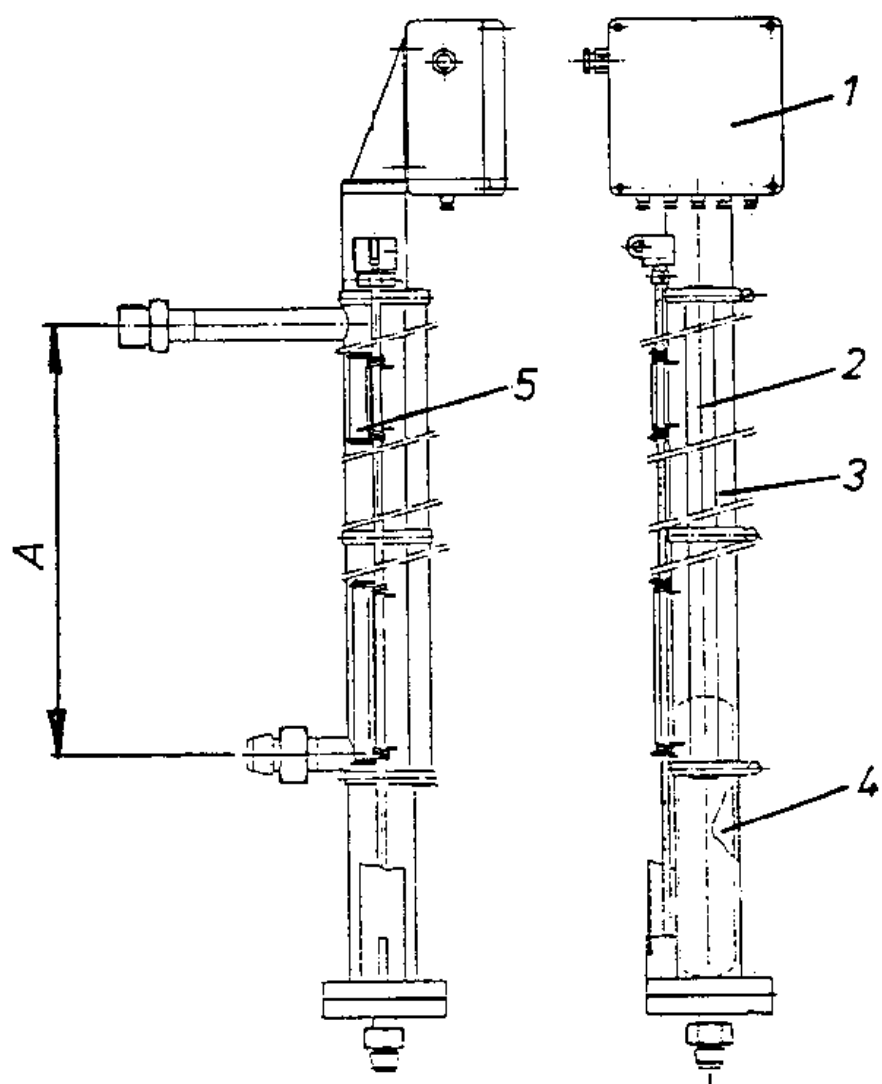
R1 42 01 07

Hydraulics-directive for suppliers, erection
companies, managers and users
Part 7: Selection Measuring-, Directing- and
Control equipment

Hydraulics-directive for suppliers, erection companies, managers and users
Part 7: Selection Measuring-, Directing- and Control equipment

Corus Services IJmuiden
Manufacture Intra Automation H.T.P.

R1 42 01 07
Hydraulics-directive for suppliers, erection
companies, managers and users
Part 7:Selection Measuring-, Directing- and
Control equipment



erection
rs
ing- and

Corus Services IJmuiden 1000	1000	R142 01 07 870
		<p>Hydraulics-directive for suppliers, erection companies, managers and users</p> <p>Part 7:Selection Measuring-, Directing- and Control equipment</p>

Corus Services, Hmuiden
2006-3000

1250

R1-42-01-07
1120

Hydraulics-directive for suppliers, erection
companies, managers and users
Part 7: Selection Measuring-, Directing- and
Control equipment

<div> <div>Corus Services Unipiden</div> <div>4000-10.000</div> </div>	<div> <div>1600</div> </div>	<div> <div>R1 42 01 07</div> <div>1470</div> </div>
		<div> <div>Hydraulics-directive for suppliers, erection companies, managers and users</div> <div>Part 7:Selection Measuring-, Directing- and Control equipment</div> </div>

Corus Services IJmuiden

R1 42 01 07

Hydraulics-directive for suppliers, erection
companies, managers and users
Part 7: Selection Measuring-, Directing- and
Control equipment

Corus Services IJmuiden

R1 42 01 07

Hydraulics-directive for suppliers, erection
companies, managers and users
Part 7: Selection Measuring-, Directing- and
Control equipment

Corus Services Limbiden
For composition see Corus drawing 921.551

design A, R1 42 01 07
Hydraulics-directive for suppliers, erection
companies, managers and users
Part 7: Selection Measuring-, Directing- and
Control equipment

Corus Services Inruiden
For parts see Corus drawing 921.552.

R1 42 01 07
Hydraulics-directive for suppliers, erection
companies, managers and users
Part 7:Selection Measuring-, Directing- and
Control equipment

Corus Services II Imuiden
For parts list see Corus drawing 921.553 sheet 1.

R1 42 01 07

Hydraulics-directive for suppliers, erection
companies, managers and users

Part 7: Selection Measuring-, Directing- and
Control equipment

Corus Services IJmuiden

R1 42 01 07

Hydraulics-directive for suppliers, erection
companies, managers and users
Part 7: Selection Measuring-, Directing- and
Control equipment

Corus Services IJmuiden
Scheme 7.1

R1 42 01 07
Hydraulics-directive for suppliers, erection
companies, managers and users
Part 7: Selection Measuring-, Directing- and
Control equipment

Corus Services IJmuiden

R1 42 01 07

Hydraulics-directive for suppliers, erection
companies, managers and users
Part 7: Selection Measuring-, Directing- and
Control equipment

Corus Services Hmuiden
Position no.

Description

R1 42 01 07

Manufacture

Hydraulics-directive for suppliers, erection
companies, managers and users
Part 7:Selection Measuring-, Directing- and
Control equipment

Corus Services IJmuiden

Terminal box

R1 42.01.07
Rose

Hydraulics-directive for suppliers, erection
companies, managers and users
Part 7: Selection Measuring-, Directing- and
Control equipment

Hydraulics-directive for suppliers, erection companies, managers and users
Part 7: Selection Measuring-, Directing- and Control equipment

Corus Services Hmuiden

Riser pipe

R1 42-01-07

Corus drawing 921.552.

Hydraulics-directive for suppliers, erection
companies, managers and users
Part 7: Selection Measuring-, Directing- and
Control equipment

Hydraulics-directive for suppliers, erection
companies, managers and users
Part 7: Selection Measuring-, Directing- and
Control equipment

Corus Services Hmuiden

Make and break contacts

R1 42 01 07
Elobau

Hydraulics-directive for suppliers, erection
companies, managers and users
Part 7: Selection Measuring-, Directing- and
Control equipment

Corus Services IJmuiden

R1 42 01 07

Hydraulics-directive for suppliers, erection
companies, managers and users
Part 7: Selection Measuring-, Directing- and
Control equipment

Corus Services IJmuiden
Marks:

R1 42 01 07

Hydraulics-directive for suppliers, erection
companies, managers and users
Part 7: Selection Measuring-, Directing- and
Control equipment

Corus Services IJmuiden
Next marks to be present at level indicator:

R1 42 01 07
Hydraulics-directive for suppliers, erection
companies, managers and users
Part 7: Selection Measuring-, Directing- and
Control equipment

Corus Services IJmuiden
Too high

R1 42 01 07
Hydraulics-directive for suppliers, erection
companies, managers and users
Part 7: Selection Measuring-, Directing- and
Control equipment

Corus Services Uuiden
Maximum fill

R1 42 01 07

Hydraulics-directive for suppliers, erection
companies, managers and users
Part 7: Selection Measuring-, Directing- and
Control equipment

Corus Services IJmuiden
Low

R1 42 01 07
Hydraulics-directive for suppliers, erection
companies, managers and users
Part 7: Selection Measuring-, Directing- and
Control equipment

Corus Services IJmuiden
Too low

R1 42 01 07
Hydraulics-directive for suppliers, erection
companies, managers and users
Part 7: Selection Measuring-, Directing- and
Control equipment

Corus Services IJmuiden

R1 42 01 07

Hydraulics-directive for suppliers, erection
companies, managers and users
Part 7: Selection Measuring-, Directing- and
Control equipment

Corus Services, IJmuiden
All these levels must be in sight at level indicator

R1 42 01 07

Hydraulics-directive for suppliers, erection
companies, managers and users
Part 7: Selection Measuring-, Directing- and
Control equipment

Corus Services IJmuiden

R1 42 01 07

Hydraulics-directive for suppliers, erection
companies, managers and users
Part 7: Selection Measuring-, Directing- and
Control equipment

Corus Services IJmuiden

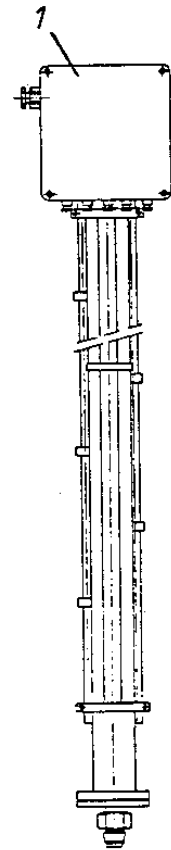
R1 42 01 07

Hydraulics-directive for suppliers, erection
companies, managers and users
Part 7: Selection Measuring-, Directing- and
Control equipment

Corus Services UvA
Manufacture Doedijns

R1 42 01 07

Hydraulics-directive for suppliers, erection
companies, managers and users
Part 7: Selection Measuring-, Directing- and
Control equipment



Suppliers, erection
and users
5-, Directing- and
ment

Corus Services IJmuiden

R1 42 01 07

Hydraulics-directive for suppliers, erection
companies, managers and users
Part 7: Selection Measuring-, Directing- and
Control equipment

Corus Services IJmuiden

1000

1000

R142 01 07

1209

Hydraulics-directive for suppliers, erection
companies, managers and users
Part 7: Selection Measuring-, Directing- and
Control equipment

<div> <div>Corus Services Huiden</div> <div>2000-3000</div> </div>	<div>1250</div>	<div> <div>R142 01 07</div> <div>1459</div> </div>
		<div> <div>Hydraulics-directive for suppliers, erection companies, managers and users</div> <div>Part 7:Selection Measuring-, Directing- and Control equipment</div> </div>

Corus Services, Unipiden
4066-10.000

1600

R1.42 01 07
1809

Hydraulics-directive for suppliers, erection
companies, managers and users
Part 7:Selection Measuring-, Directing- and
Control equipment

Corus Services IJmuiden

R1 42 01 07

Hydraulics-directive for suppliers, erection
companies, managers and users
Part 7: Selection Measuring-, Directing- and
Control equipment

Corus Services Limbiden
For composition see Corus drawing 921.551

design B. R1 42 01 07
Hydraulics-directive for suppliers, erection
companies, managers and users
Part 7: Selection Measuring-, Directing- and
Control equipment

Corus Services Inruiden
For parts see Corus drawing 934.217.

R1 42 01 07
Hydraulics-directive for suppliers, erection
companies, managers and users
Part 7: Selection Measuring-, Directing- and
Control equipment

Corus Services II Imuiden
For parts list see Corus drawing 921.553 sheet 2.

R1 42 01 07

Hydraulics-directive for suppliers, erection
companies, managers and users
Part 7: Selection Measuring-, Directing- and
Control equipment

Corus Services IJmuiden

R1 42 01 07

Hydraulics-directive for suppliers, erection
companies, managers and users
Part 7: Selection Measuring-, Directing- and
Control equipment

Corus Services IJmuiden

R1 42 01 07

Hydraulics-directive for suppliers, erection
companies, managers and users
Part 7: Selection Measuring-, Directing- and
Control equipment

Corus Services IJmuiden
Scheme 7.2

R1 42 01 07
Hydraulics-directive for suppliers, erection
companies, managers and users
Part 7: Selection Measuring-, Directing- and
Control equipment

Corus Services IJmuiden

R1 42 01 07

Hydraulics-directive for suppliers, erection
companies, managers and users
Part 7: Selection Measuring-, Directing- and
Control equipment

Corus Services Hmuiden	Position no.	Description	R1 42 01 07 Manufacture Hydraulics-directive for suppliers, erection companies, managers and users Part 7:Selection Measuring-, Directing- and Control equipment

Corus Services IJmuiden

Terminal box

R1.42.01 07

Rose

Hydraulics-directive for suppliers, erection
companies, managers and users
Part 7: Selection Measuring-, Directing- and
Control equipment

Hydraulics-directive for suppliers, erection
companies, managers and users
Part 7: Selection Measuring-, Directing- and
Control equipment

Hydraulics-directive for suppliers, erection
companies, managers and users
Part 7: Selection Measuring-, Directing- and
Control equipment

Corus Services Hmuiden	Indicator	R1.42.01.07 Makrolon
		<p>Hydraulics-directive for suppliers, erection companies, managers and users</p> <p>Part 7:Selection Measuring-, Directing- and Control equipment</p>

Corus Services IJmuiden

Float

R1-42 01 07

Corus drawing 934.217.

Hydraulics-directive for suppliers, erection
companies, managers and users
Part 7: Selection Measuring-, Directing- and
Control equipment

Corus Services IJmuiden

R1 42 01 07

Hydraulics-directive for suppliers, erection
companies, managers and users
Part 7: Selection Measuring-, Directing- and
Control equipment

Corus Services IJmuiden

Marks:

R1 42 01 07

Hydraulics-directive for suppliers, erection
companies, managers and users
Part 7: Selection Measuring-, Directing- and
Control equipment

Corus Services Uvuiden
Next marks to be present at level indicator:

R1 42 01 07

Hydraulics-directive for suppliers, erection
companies, managers and users
Part 7: Selection Measuring-, Directing- and
Control equipment

Corus Services IJmuiden
= Too high

R1 42 01 07
Hydraulics-directive for suppliers, erection
companies, managers and users
Part 7: Selection Measuring-, Directing- and
Control equipment

Corus Services Unvinden
Maximum fill

R1 42 01 07
Hydraulics-directive for suppliers, erection
companies, managers and users
Part 7:Selection Measuring-, Directing- and
Control equipment

Corus Services IJmuiden
Low

R1 42 01 07
Hydraulics-directive for suppliers, erection
companies, managers and users
Part 7: Selection Measuring-, Directing- and
Control equipment

Corus Services IJmuiden
Too low

R1 42 01 07
Hydraulics-directive for suppliers, erection
companies, managers and users
Part 7: Selection Measuring-, Directing- and
Control equipment

Corus Services IJmuiden

R1 42 01 07

Hydraulics-directive for suppliers, erection
companies, managers and users
Part 7: Selection Measuring-, Directing- and
Control equipment

Corus Services Uniden
All these levels must be in sight at level indicator

R1 42 01 07

Hydraulics-directive for suppliers, erection
companies, managers and users
Part 7: Selection Measuring-, Directing- and
Control equipment

Corus Services IJmuiden
General

R1 42 01 07

Hydraulics-directive for suppliers, erection
companies, managers and users
Part 7: Selection Measuring-, Directing- and
Control equipment

Corus Services IJmuiden
Medium

: Mineral oil

R1 42 01 07

Hydraulics-directive for suppliers, erection
companies, managers and users
Part 7: Selection Measuring-, Directing- and
Control equipment

Corus Services Uniden
Medium density : 0,8

R1 42 01 07
Hydraulics-directive for suppliers, erection
companies, managers and users
Part 7: Selection Measuring-, Directing- and
Control equipment

Corus Services II Imuiden
Medium temperature

: -20/0/+85 °C

R1 42 01 07

Hydraulics-directive for suppliers, erection
companies, managers and users
Part 7: Selection Measuring-, Directing- and
Control equipment

Corus Services Uv
Switch distance

: At least possible 15 mm

R1 42 01 07

Hydraulics-directive for suppliers, erection
companies, managers and users
Part 7: Selection Measuring-, Directing- and
Control equipment

Corus Services, IJmuiden
Protection class

: IP 54

R1 42 01 07

Hydraulics-directive for suppliers, erection
companies, managers and users
Part 7: Selection Measuring-, Directing- and
Control equipment

Corus Services, Imuiden

Switch contacts

: 3 or 5 switches, bistable, make and break contacts
R142 01 07
Hydraulics-directive for suppliers, erection
companies, managers and users
Part 7: Selection Measuring-, Directing- and
Control equipment

Corus Services IJmuiden
Contact load

R1 42 01 07

Hydraulics-directive for suppliers, erection
companies, managers and users
Part 7: Selection Measuring-, Directing- and
Control equipment

Corus Services IJmuiden
Type

: Max. 60 VA, 250 V

R1 42 01 07

Hydraulics-directive for suppliers, erection
companies, managers and users
Part 7: Selection Measuring-, Directing- and
Control equipment

Corus Services IJmuiden

R1 42 01 07

Hydraulics-directive for suppliers, erection
companies, managers and users
Part 7: Selection Measuring-, Directing- and
Control equipment

Corus Services IJmuiden

R1 42 01 07

Hydraulics-directive for suppliers, erection
companies, managers and users
Part 7: Selection Measuring-, Directing- and
Control equipment

7.7.4. ~~Corus Services Unaudited~~
Single level switches

R1 42 01 07

Hydraulics-directive for suppliers, erection
companies, managers and users
Part 7: Selection Measuring-, Directing- and
Control equipment

Corus Services IJmuiden

Dimensions

R1 42 01 07

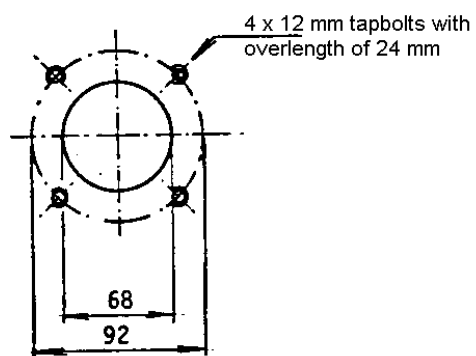
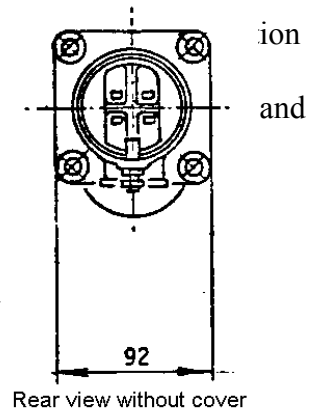
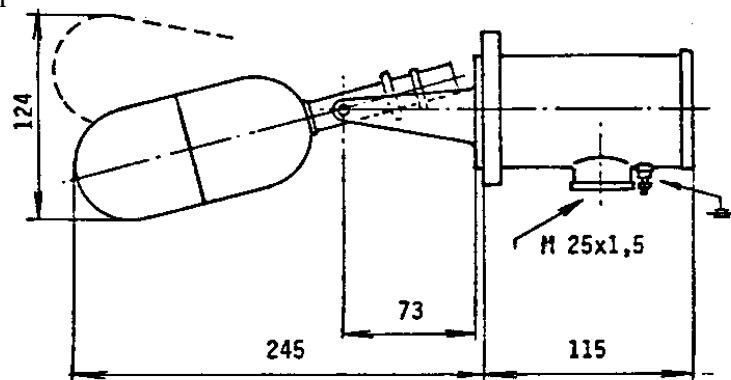
Hydraulics-directive for suppliers, erection
companies, managers and users
Part 7: Selection Measuring-, Directing- and
Control equipment

Corus Services IJmuiden

R1 42 01 07

Hydraulics-directive for suppliers, erection
companies, managers and users
Part 7: Selection Measuring-, Directing- and
Control equipment

Corus Ser



Corus Services IJmuiden

R1 42 01 07

Hydraulics-directive for suppliers, erection
companies, managers and users
Part 7: Selection Measuring-, Directing- and
Control equipment

Corus Services IJmuiden

R1 42 01 07

Hydraulics-directive for suppliers, erection
companies, managers and users
Part 7: Selection Measuring-, Directing- and
Control equipment

Corus Services, Umuïden
Technical data

R1 42 01 07

Hydraulics-directive for suppliers, erection
companies, managers and users
Part 7: Selection Measuring-, Directing- and
Control equipment

Corus Services IJmuiden
General

R1 42 01 07

Hydraulics-directive for suppliers, erection
companies, managers and users
Part 7: Selection Measuring-, Directing- and
Control equipment

Corus Services IJmuiden
Medium

: Mineral oil

R1 42 01 07

Hydraulics-directive for suppliers, erection
companies, managers and users
Part 7: Selection Measuring-, Directing- and
Control equipment

Corus Services, Inmuiden
Medium density

: 0,7

R1 42 01 07

Hydraulics-directive for suppliers, erection
companies, managers and users
Part 7: Selection Measuring-, Directing- and
Control equipment

Corus Services, IJmuiden
Max. operational pressure

: 18 bar

R1 42 01 07

Hydraulics-directive for suppliers, erection
companies, managers and users
Part 7: Selection Measuring-, Directing- and
Control equipment

Corus Services, IJmuiden
Max. operational temperature

: 210 °C

R1 42 01 07

Hydraulics-directive for suppliers, erection
companies, managers and users
Part 7: Selection Measuring-, Directing- and
Control equipment

Corus Services IJmuiden

Hysteresis

: differential level 13 mm

R1 42 01 07

Hydraulics-directive for suppliers, erection
companies, managers and users
Part 7: Selection Measuring-, Directing- and
Control equipment

Corus Services IJmuiden
Manufacture

: Mobrey type S36DA/F84 R1 42 01 07

Hydraulics-directive for suppliers, erection
companies, managers and users
Part 7: Selection Measuring-, Directing- and
Control equipment

Corus Services IJmuiden

R1 42 01 07

Hydraulics-directive for suppliers, erection
companies, managers and users
Part 7: Selection Measuring-, Directing- and
Control equipment

Corus Services IJmuiden

Mentioned pressures and temperatures concern that parts that are may get in contact with

R1.42.01.07

Hydraulics-directive for suppliers, erection companies, managers and users

Part 7: Selection Measuring-, Directing- and Control equipment

Corus Services IJmuiden
Hyd.

R1 42 01 07
Hydraulics-directive for suppliers, erection
companies, managers and users
Part 7: Selection Measuring-, Directing- and
Control equipment

Corus Services IJmuiden
Switch housing

R1 42 01 07

Hydraulics-directive for suppliers, erection
companies, managers and users
Part 7: Selection Measuring-, Directing- and
Control equipment

Corus Services Umluiden
Ambient temperature between 1 °C and 60 °C

R1 42 01 07
Hydraulics-directive for suppliers, erection
companies, managers and users
Part 7: Selection Measuring-, Directing- and
Control equipment

Corus Services Unmuiden:
Operational pressure is equal to atmospheric pressure.

R1 42 01 07

Hydraulics-directive for suppliers, erection
companies, managers and users
Part 7: Selection Measuring-, Directing- and
Control equipment

Corus Services Uv
Contact load

R1 42 01 07

Hydraulics-directive for suppliers, erection
companies, managers and users
Part 7:Selection Measuring-, Directing- and
Control equipment

Corus Services Inmuiden
Switch type D with 2 single silver contacts - bistable.

R1 42 01 07

Hydraulics-directive for suppliers, erection
companies, managers and users
Part 7: Selection Measuring-, Directing- and
Control equipment

Corus Services IJmuiden

R1 42 01 07

Hydraulics-directive for suppliers, erection
companies, managers and users
Part 7: Selection Measuring-, Directing- and
Control equipment

Corus Services IJmuiden
Scheme 7.3

R1 42 01 07
Hydraulics-directive for suppliers, erection
companies, managers and users
Part 7: Selection Measuring-, Directing- and
Control equipment

Corus Services, IJmuiden
Maximum contact load

R1 42 01 07
Hydraulics-directive for suppliers, erection
companies, managers and users
Part 7: Selection Measuring-, Directing- and
Control equipment

Corus Services IJmuiden

R1 42 01 07

Hydraulics-directive for suppliers, erection
companies, managers and users
Part 7: Selection Measuring-, Directing- and
Control equipment

Corus Services Hmuiden	AC	<div> <div>R1 42 01 07</div> <div> <div>DC</div> <div>Hydraulics-directive for suppliers, erection</div> <div>DC</div> </div> </div> <div> <div>companies, managers and users</div> <div>Part 7:Selection Measuring-, Directing- and</div> <div>Control equipment</div> </div>

Corus Services IJmuiden	440	240 R1 42 01 07 240
		<div data-bbox="885 141 1452 286"> <p>Hydraulics-directive for suppliers, erection companies, managers and users</p> <p>Part 7:Selection Measuring-, Directing- and Control equipment</p> </div>

Hydraulics-directive for suppliers, erection
companies, managers and users
Part 7: Selection Measuring-, Directing- and
Control equipment

Corus Services Hmuiden	0,4 min	<div data-bbox="1082 96 1251 152">R1 42 01 07</div> <div data-bbox="975 118 1129 152">40 ms max.</div> <div data-bbox="884 136 1453 286"> Hydraulics-directive for suppliers, erection companies, managers and users Part 7:Selection Measuring-, Directing- and Control equipment </div>
------------------------	---------	--

Corus Services IJmuiden

R1 42 01 07

Hydraulics-directive for suppliers, erection
companies, managers and users
Part 7: Selection Measuring-, Directing- and
Control equipment

Corus Services IJmuiden
Terminals

R1 42 01 07
Hydraulics-directive for suppliers, erection
companies, managers and users
Part 7: Selection Measuring-, Directing- and
Control equipment

Corus Services IJmuiden Rising level

R1 42 01 07
Falling level
Hydraulics-directive for suppliers, erection
companies, managers and users
Part 7: Selection Measuring-, Directing- and
Control equipment

Corus Services IJmuiden

B ● ● B
A ● — ● A

R1 42 01 07

Hydraulic direction for suppliers, erection
companies, managers and users
Part 7: Selection Measuring-, Directing- and
Control equipment

Corus Services IJmuiden

R1 42 01 07

Hydraulics-directive for suppliers, erection
companies, managers and users
Part 7: Selection Measuring-, Directing- and
Control equipment

Corus Services IJmuiden

R1 42 01 07

Hydraulics-directive for suppliers, erection
companies, managers and users
Part 7: Selection Measuring-, Directing- and
Control equipment

Corus Services IJmuiden

R1 42 01 07

Hydraulics-directive for suppliers, erection
companies, managers and users
Part 7: Selection Measuring-, Directing- and
Control equipment

7.8. ~~Corus Services Limbiden~~
Water-In-oil detectors

R1 42 01 07

Hydraulics-directive for suppliers, erection
companies, managers and users
Part 7:Selection Measuring-, Directing- and
Control equipment

Corus Services Limuiden
Dimensions in mm

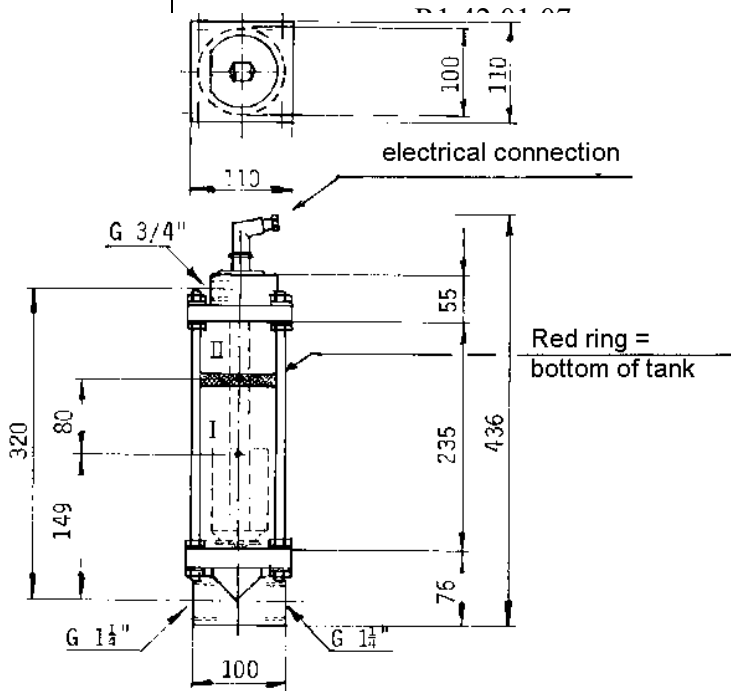
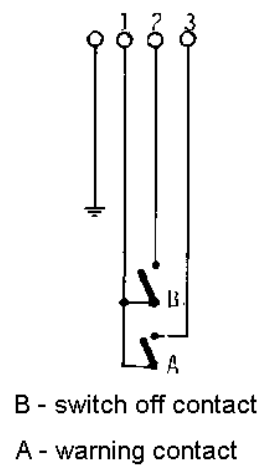
R1 42 01 07

Hydraulics-directive for suppliers, erection
companies, managers and users
Part 7: Selection Measuring-, Directing- and
Control equipment

Corus Services IJmuiden
Figure 7.15

R1 42 01 07
Hydraulics-directive for suppliers, erection
companies, managers and users
Part 7: Selection Measuring-, Directing- and
Control equipment

Corus Se



ion
and

Corus Services IJmuiden

R1 42 01 07

Hydraulics-directive for suppliers, erection
companies, managers and users
Part 7: Selection Measuring-, Directing- and
Control equipment

Corus Services IJmuiden
Water Indicator

R1 42 01 07

Hydraulics-directive for suppliers, erection
companies, managers and users
Part 7: Selection Measuring-, Directing- and
Control equipment

Corus Services IJmuiden
Manufacture

R1:42 01 07
Bühler und Co, Ratingen
Hydraulics-directive for suppliers, erection
companies, managers and users
Part 7:Selection Measuring-, Directing- and
Control equipment

Corus Services IJmuiden
Type

R142 01 07
Wasserwarner, WW3
Hydraulics-directive for suppliers, erection
companies, managers and users
Part 7: Selection Measuring-, Directing- and
Control equipment

Corus Services Uvueden
Maximum allowable operating pressure

R1 42 01 07
Hydraulics-directive for suppliers, erection
companies, managers and users
Part 7: Selection Measuring-, Directing- and
Control equipment

Corus Services IJmuiden
Current connection

: 220V R1 42 01 07
Hydraulics-directive for suppliers, erection
companies, managers and users
Part 7: Selection Measuring-, Directing- and
Control equipment

Corus Services IJmuiden
Contact load

: ~ 100VA R1 42 01 07
Hydraulics-directive for suppliers, erection
companies, managers and users
Part 7: Selection Measuring-, Directing- and
Control equipment

Corus Services IJmuiden
Contact load

: = 50W R1 42 01 07
Hydraulics-directive for suppliers, erection
companies, managers and users
Part 7: Selection Measuring-, Directing- and
Control equipment

Corus Services IJmuiden
Switch current

R1 42 01 07
: 1A
Hydraulics-directive for suppliers, erection
companies, managers and users
Part 7:Selection Measuring-, Directing- and
Control equipment

Corus Services IJmuiden

R1 42 01 07

Hydraulics-directive for suppliers, erection
companies, managers and users
Part 7: Selection Measuring-, Directing- and
Control equipment

Corus Services Unuiden.
Suitable for mineral oil.

R1 42 01 07
Hydraulics-directive for suppliers, erection
companies, managers and users
Part 7: Selection Measuring-, Directing- and
Control equipment

Corus Services Uvuiden

Minimum temperature +0 °C (Max. viscosity 1200 Centistokes)

R1 42 01 07

Hydraulics-directive for suppliers, erection companies, managers and users

Part 7: Selection Measuring-, Directing- and Control equipment

Corus Services Ilmuiden
Maximum temperature +80 °C.

R1 42 01 07
Hydraulics-directive for suppliers, erection
companies, managers and users
Part 7: Selection Measuring-, Directing- and
Control equipment

Corus Services, IJmuiden
Weight 6 kg.

R1 42 01 07
Hydraulics-directive for suppliers, erection
companies, managers and users
Part 7: Selection Measuring-, Directing- and
Control equipment

Coras Services Uvuiden
Contacts: make and break contacts.

R1 42 01 07
Hydraulics-directive for suppliers, erection
companies, managers and users
Part 7: Selection Measuring-, Directing- and
Control equipment

Corus Services IJmuiden

R1 42 01 07

Hydraulics-directive for suppliers, erection
companies, managers and users
Part 7: Selection Measuring-, Directing- and
Control equipment

Corus Services IJmuiden

R1 42 01 07

Hydraulics-directive for suppliers, erection
companies, managers and users
Part 7: Selection Measuring-, Directing- and
Control equipment

Hydraulics-directive for suppliers, erection
companies, managers and users
Part 7: Selection Measuring-, Directing- and
Control equipment

Corus Services Uv

In this Technical Directive reference is made to

R1 42 01 07

Hydraulics-directive for suppliers, erection
companies, managers and users
Part 7: Selection Measuring-, Directing- and
Control equipment

Corus Services IJmuiden

R1 42 01 07

Hydraulics-directive for suppliers, erection
companies, managers and users
Part 7: Selection Measuring-, Directing- and
Control equipment

Corus Services, IJmuiden
DIN 3852, Form X

R1 42 01 07
Hydraulics-directive for suppliers, erection
companies, managers and users
Part 7: Selection Measuring-, Directing- and
Control equipment

Corus Services IJmuiden

R1 42 01 07

Hydraulics-directive for suppliers, erection
companies, managers and users
Part 7: Selection Measuring-, Directing- and
Control equipment

Corus Services-Umuiden
Corus drawings

R1 42 01 07
Hydraulics-directive for suppliers, erection
companies, managers and users
Part 7:Selection Measuring-, Directing- and
Control equipment

Corus Services Jmuiden
921.351, model A and B

R1 42 01 07
Hydraulics-directive for suppliers, erection
companies, managers and users
Part 7: Selection Measuring-, Directing- and
Control equipment

Corus Services Hmuiden
921.552

R1 42 01 07
Hydraulics-directive for suppliers, erection
companies, managers and users
Part 7: Selection Measuring-, Directing- and
Control equipment

Corus Services Imuiden
934.217

R1 42 01 07
Hydraulics-directive for suppliers, erection
companies, managers and users
Part 7: Selection Measuring-, Directing- and
Control equipment

Corus Services IJmuiden

R1 42 01 07

Hydraulics-directive for suppliers, erection
companies, managers and users
Part 7: Selection Measuring-, Directing- and
Control equipment

Corus Services IJmuiden

R1 42 01 07

Hydraulics-directive for suppliers, erection
companies, managers and users
Part 7: Selection Measuring-, Directing- and
Control equipment

Hydraulics-directive for suppliers, erection
companies, managers and users
Part 7: Selection Measuring-, Directing- and
Control equipment

Corus Services Uv

This document is a part of the Hydraulic Directive for suppliers, construction firms, Hydraulics-directive for suppliers, erection companies, managers and users
Part 7: Selection Measuring-, Directing- and Control equipment

Corus Services IJmuiden
exploitants and occupants, consisting of 10 volumes.

R1 42 01 07

Hydraulics-directive for suppliers, erection
companies, managers and users
Part 7: Selection Measuring-, Directing- and
Control equipment

Corus Services Unmuiden

This document replaces HO-standard Hydraulics 42.00 series.

R1 42 01 07

Hydraulics-directive for suppliers, erection
companies, managers and users

Part 7: Selection Measuring-, Directing- and
Control equipment

Corus Services IJmuiden

R1 42 01 07

Hydraulics-directive for suppliers, erection
companies, managers and users
Part 7: Selection Measuring-, Directing- and
Control equipment

Corus Services IJmuiden
Version 1.1.

R1 42 01 07
Hydraulics-directive for suppliers, erection
companies, managers and users
Part 7: Selection Measuring-, Directing- and
Control equipment

Corus Services Unmuiden
Logo changed.

R1 42 01 07
Hydraulics-directive for suppliers, erection
companies, managers and users
Part 7: Selection Measuring-, Directing- and
Control equipment

Corus Services IJmuiden

R1 42 01 07

Hydraulics-directive for suppliers, erection
companies, managers and users
Part 7: Selection Measuring-, Directing- and
Control equipment

Corus Services, IJmuiden
Various minor layout and text changes.

R1 42 01 07
Hydraulics-directive for suppliers, erection
companies, managers and users
Part 7: Selection Measuring-, Directing- and
Control equipment

Corus Services IJmuiden

R1 42 01 07

Hydraulics-directive for suppliers, erection
companies, managers and users
Part 7: Selection Measuring-, Directing- and
Control equipment

Corus Services Umuider
Various minor modifications.

R1 42 01 07
Hydraulics-directive for suppliers, erection
companies, managers and users
Part 7:Selection Measuring-, Directing- and
Control equipment

Corus Services IJmuiden

R1 42 01 07

Hydraulics-directive for suppliers, erection
companies, managers and users
Part 7: Selection Measuring-, Directing- and
Control equipment

Corus Services Umuiden
Completely changed

R1 42 01 07

Hydraulics-directive for suppliers, erection
companies, managers and users
Part 7: Selection Measuring-, Directing- and
Control equipment

Corus Services IJmuiden

R1 42 01 07

Hydraulics-directive for suppliers, erection
companies, managers and users
Part 7: Selection Measuring-, Directing- and
Control equipment