



## Case study

### Shurgard self-storage facility, Greenwich, London

**Client:** Shurgard Europe

**Architect:** Threesixty Architecture

**Main contractor:** Appian Construction

**Cladding installer:** Hadleigh Barbour

**Metal decking installer:** Composite Profiles

**Tata Steel products:** Trimapanel® flat 70mm thick, 1000mm module insulated panels with Colorcoat HPS200 Ultra® pre-finished steel and ComFlor® 60 metal floor decking.

**Awards:** FEDESSA Extraordinary Achievement

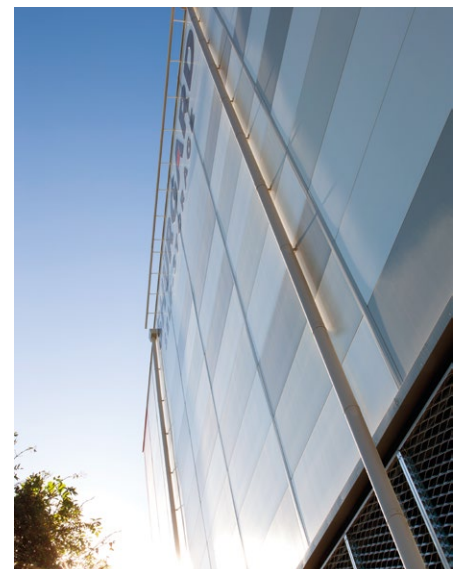
**Year:** 2017

Containing 1,553 self-storage units spread over four floors, Shurgard Greenwich is said to be one of the largest self-storage facilities in Europe.

Located close to the Blackwall Tunnel and The O2 Arena in South East London, Shurgard Greenwich features a range of units of differing sizes, all serviced by three spacious lifts, with loading and unloading docks positioned beneath the building.

It provides dry, clean and secure self-storage in a facility that achieved a BREEM 'Excellent' rating.

Shurgard has a number of facilities throughout the UK and has a generic build









programme for all of its projects, whereby it generally uses the same project team and similar products.

However, for this scheme Tata Steel's products were used for the first time.

Work on this project commenced during the summer of 2017 and the facility was completed in early 2018.

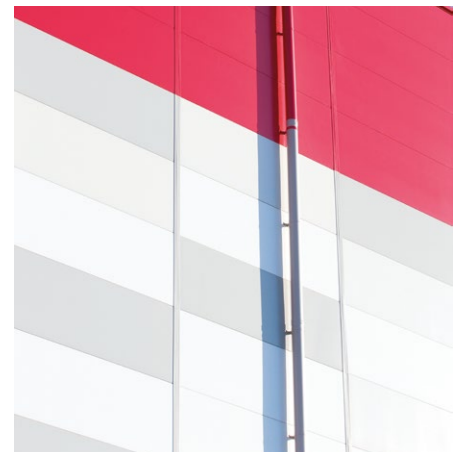
#### The challenge

The client wanted a sustainable building envelope that would protect the self-storage

units from the elements, and one that would not only maximise BREEAM credits but would also achieve a short build timescale of three months.

Shurgard Construction Director Europe Robert Grant says: "This was the first time we had ever used Tata Steel's flat insulated panel system. Trimapanel® flat was not only a comparable alternative to other products, it was also cost-effectiveness.

"It was also important to have a product that could be supplied in our corporate colours."



#### Tata Steel products:

Trimapanel® flat is manufactured in the UK and is a smooth-faced PIR insulated panel certified to the BRE BES 6001 responsible sourcing standard. Available with Platinum® Plus system guarantee of up to 30 years, the panel is also FM approved.

These guarantees provide peace of mind to the building owner as the wall panels will continue to look good for many years to come as they are built to last.

Colorcoat HPS200 Ultra® pre-finished steel is suitable for many different construction applications.

Designed to withstand the most demanding and aggressive environments, it is available with the market-leading Confidex® Guarantee for up to 40 years for the weather side of industrial and commercial buildings – with no inspection or maintenance required to maintain its validity.

ComFlor® 60 is a round shouldered trapezoidal 60mm profile metal decking system that has exceptional resistance to compressive buckling, which results in superior span capabilities when compared to traditional decks.

The product requires a low volume of concrete topping, which reduces weight and steel rebar requirements. Shear studs are placed centrally in the product's troughs to ensure optimum placement.



### The solution

Tata Steel's established working relationship with the project's cladding installer, Hadleigh Barbour, saw them put forward an alternative building envelope solution to the one that was originally specified.

Around 3,000m<sup>2</sup> of Trimapanel<sup>®</sup> flat insulated panels, manufactured using Colorcoat HPS200 Ultra<sup>®</sup> pre-finished steel, was used to clad the external face of the Greenwich Shurgard unit, meeting all the client's requirements and fully complying with current Building Regulation standards.

Hadleigh Barbour Director Kevin Lennie says: "Tata Steel's Trimapanel<sup>®</sup> was used for the transformation of the Self-Storage facility in Greenwich because of the availability of a vast range of coloured panels, while the ease and speed of installation as well as the quality of product also contributed to the product being chosen for the project."

The construction site at Greenwich was very tight and confined, and the limited space proved a little tricky for installation of the Trimapanel<sup>®</sup>. By working from a fully independent scaffolding system erected around the entire building, the product was successfully installed, giving the client a stunning façade with crisp clean lines.

**"This was the first time we had ever used Tata Steel's flat insulated panel system. Trimapanel<sup>®</sup> flat was not only a comparable alternative to other products, it was also cost-effectiveness,"** says Shurgard Construction Director Europe Robert Grant.

Tata Steel also supplied 3,100m<sup>2</sup> of ComFlor<sup>®</sup> 60 metal floor decking, which was used throughout the facility and installed by Composite Profiles.

"We were delighted to work closely with our strategic partner, Tata Steel, on another great project," says Composite Profiles Operations Director Joel Nurser.

"The ComFlor<sup>®</sup> 60 profile is a great product as it offers value for money and superb spanning performance. The structural steelwork for this project provided typical bays of 6m with an additional support at mid span.

"With the slab depth at 150mm, the ComFlor<sup>®</sup> 60 profile could easily perform at both construction and permanent stages. When you also combine the speed of installation and reduced concrete usage, the ComFlor<sup>®</sup> 60 profile was the natural choice."

**For more information on our building envelope or structural systems, please contact a member of our design team on:**  
**T: +44 (0) 1244 892199**  
**E: [technical.envelopeproducts@tatasteeleurope.com](mailto:technical.envelopeproducts@tatasteeleurope.com)**

[www.tatasteelconstruction.com](http://www.tatasteelconstruction.com)

### Tata Steel

Shotton, Deeside  
Flintshire CH5 2NH

T: +44 (0) 1244 892199  
E: [technical.envelopeproducts@tatasteeleurope.com](mailto:technical.envelopeproducts@tatasteeleurope.com)

While care has been taken to ensure that the information contained in this publication is accurate, neither Tata Steel Europe Limited, nor its subsidiaries, accept responsibility or liability for errors or for information which is found to be misleading.

Colorcoat HPS200 Ultra, ComFlor and Trimapanel are registered trademarks of Tata Steel UK Limited.

Copyright © 2018 Tata Steel UK Limited.  
Language English UK 1118