

Trimapanel® U-values
Depth 70 = 0.31 W/m²K.
Depth 90 = 0.24 W/m²K.
Depth 120 = 0.17 W/m²K.



Tata Steel retain the right to amend the construction and technical specifications shown on this drawing without prior notice.

TATA STEEL

SALES TEL: 01244 892199
TECHNICAL TEL: 01244 892133 / 34
www.tatasteelconstruction.com

PROJECT

Trimapanel® System

TITLE
Integrated Window - Typical
Details - Jamb

DRAWN BY
JCA

SCALE
NTS

APPROVED BY

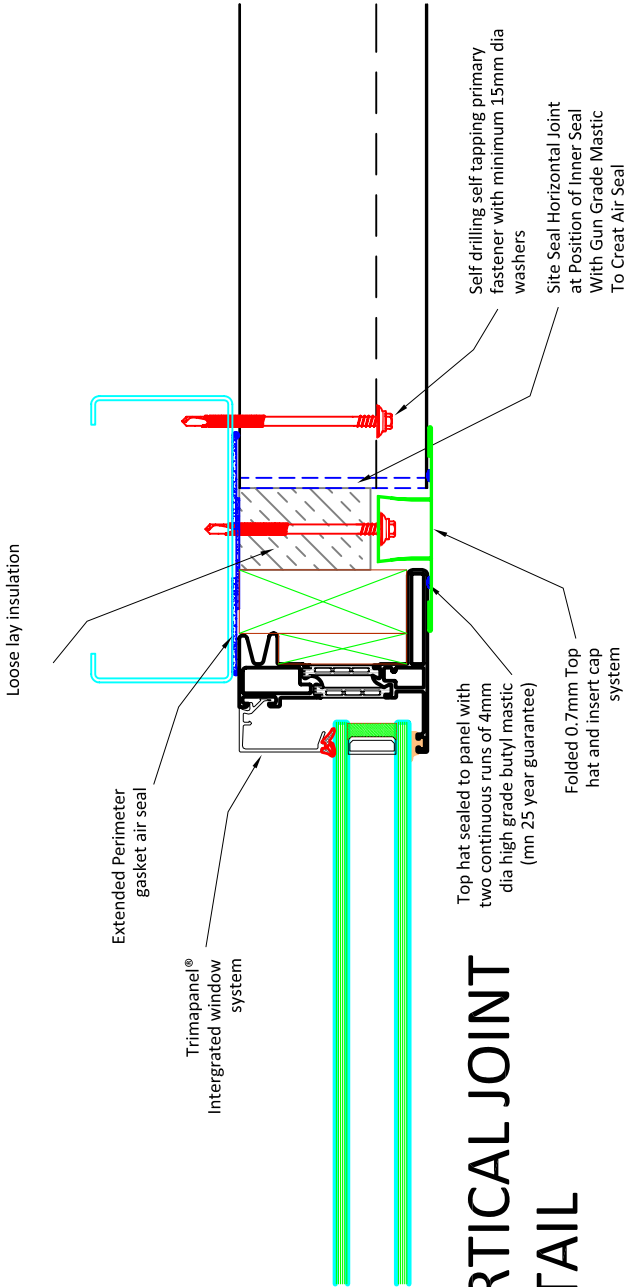
TOLERANCES

DATE

15/12/11

DRG. No.

W2-012b-03-C



VERTICAL JOINT DETAIL

The Trimapanel® integrated window system is available in three glazing options, which provide high-end functionality to more economic lighting solutions.