

OUR CAREER OFFER

PLACEMENT PROGRAMME

- Summer and annual placements offered
- Live business projects
- Continuous professional development
- End of placement reviews
- Potential to secure sponsorship and/or graduate offer at end of placement



GRADUATE PROGRAMME

2 YEAR PROGRAMME

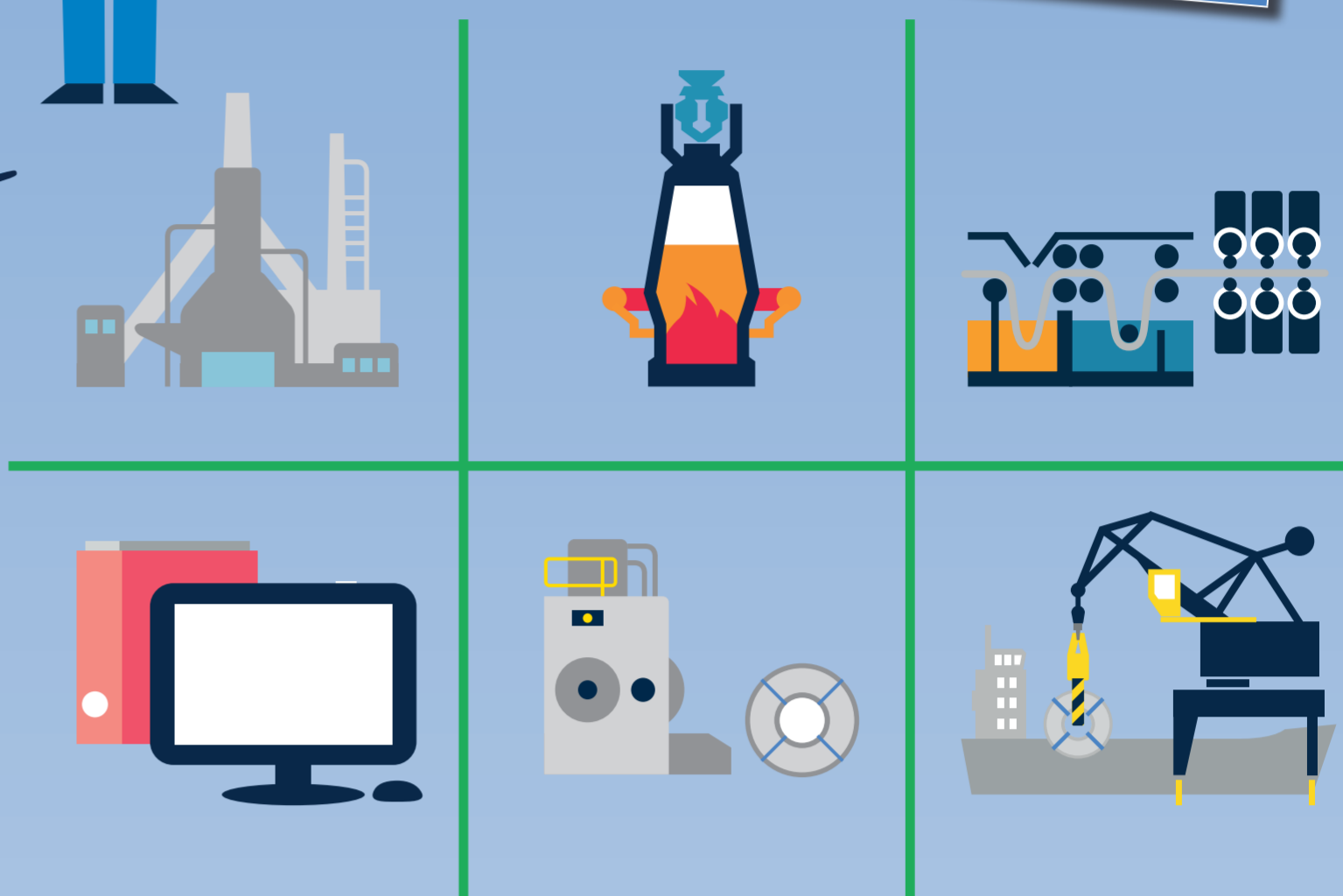
6 MONTHLY PERFORMANCE REVIEWS



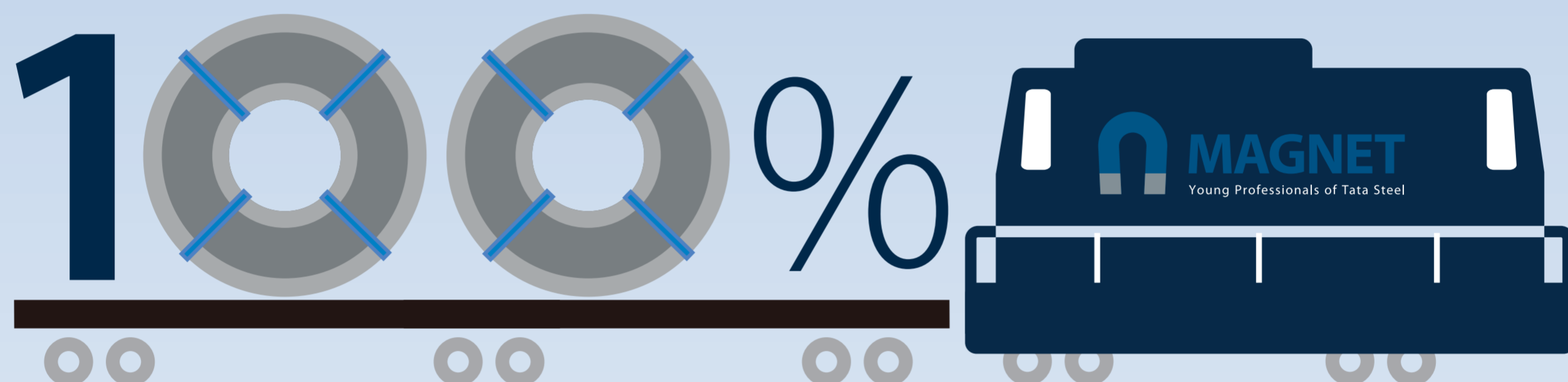
The best things about our scheme:

- RESPONSIBILITY**
Real responsibility from the beginning
- OPPORTUNITIES**
Varied experiences and opportunities to make your mark
- SUPPORT**
Lots of support from line managers, mentors and the Trainee Development team
- FLEXIBILITY**
Career paths shaped to your skills and preferences
- COMMUNITY**
Magnet, a strong and supportive graduate community
- DEVELOPMENT**
A blended learning programme developing you as a person

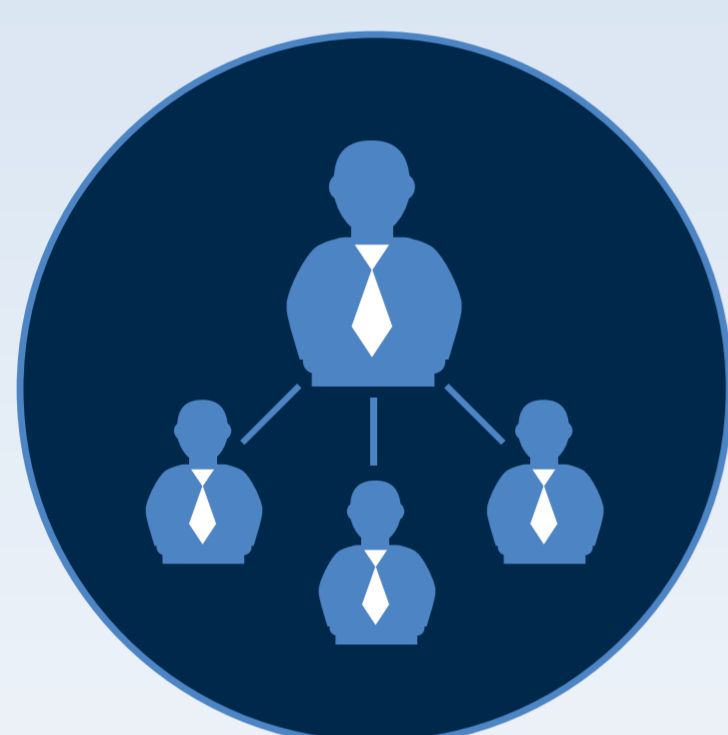
CHALLENGING PROJECTS & ASSIGNMENTS IN DIFFERENT AREAS OF THE BUSINESS



TATA STEEL SUPPORTS A 70:20:10 APPROACH TO LEARNING



COMMITMENT TO YOUR CAREER

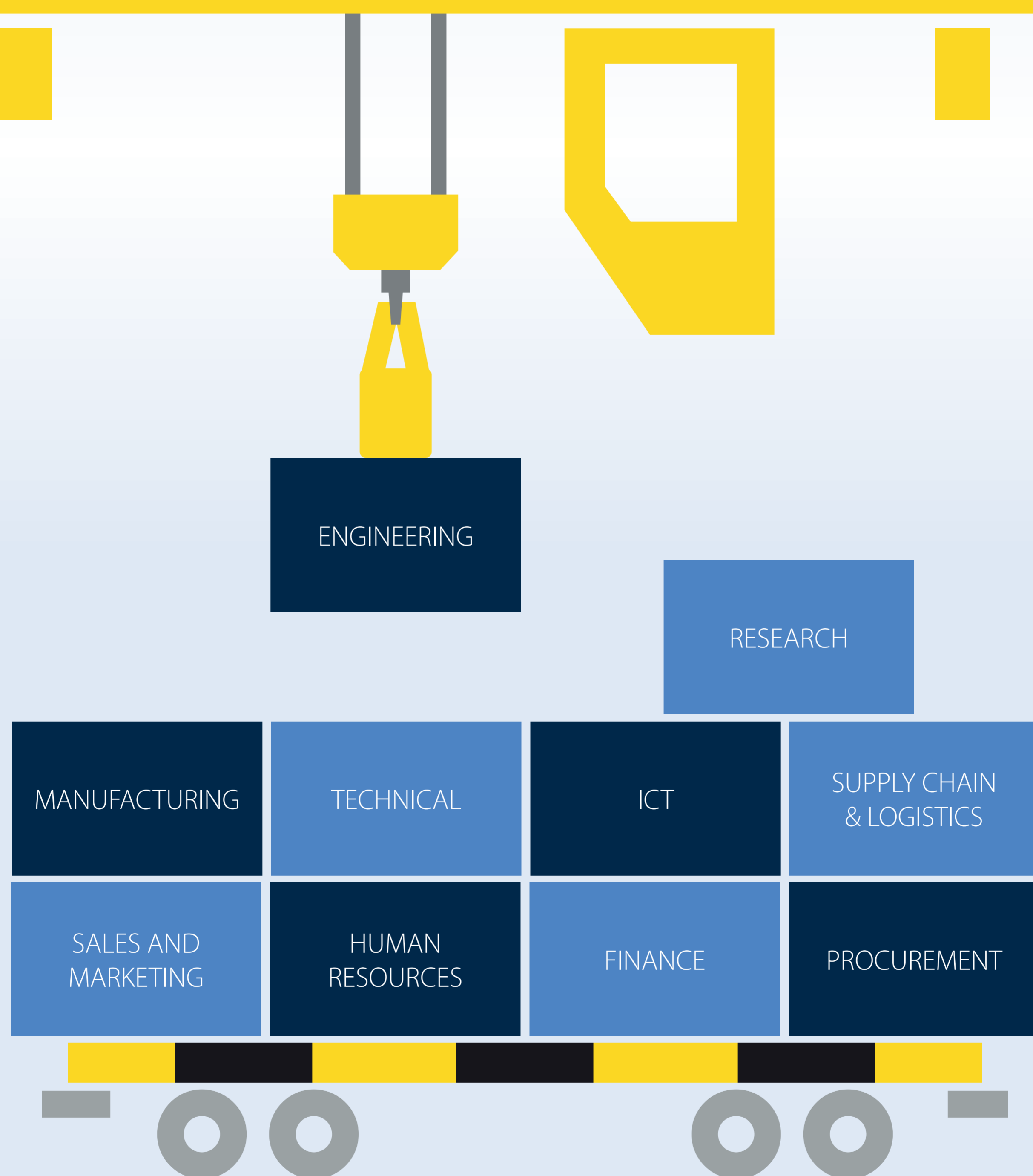


MAGNET
A professional and social graduate network



PROFESSIONAL DEVELOPMENT
Full support for qualifications / accreditation

OPPORTUNITIES IN...



World-class career: world-class benefits

Competitive starting salary & pension

Employee assistance programme

Personal development plan

CSR / volunteering opportunities

Great career prospects

Healthcare scheme

Mentoring & coaching

Discounted shopping

35 days' holiday

Graduate loan



FOLLOW US

